



# TAI-SAW TECHNOLOGY CO., LTD.

No. 3, Industrial 2nd Rd., Ping-Chen Industrial District,  
Taoyuan, 324, Taiwan, R.O.C.

TEL: 886-3-4690038 FAX: 886-3-4697532

E-mail: [tstsales@mail.taisaw.com](mailto:tstsales@mail.taisaw.com) Web: [www.taisaw.com](http://www.taisaw.com)

## Approval Sheet For Product Specification

Issued Date:

Product Name: SAW Filter 611MHz SMD 9.1x7.1mm

TST Parts No.:TA0326A

Customer Parts No.:\_\_\_\_\_

Company:\_\_\_\_\_

Division:\_\_\_\_\_

Approved by :\_\_\_\_\_

Date:\_\_\_\_\_

Checked by:\_\_\_\_\_ Bob Chau

Approval by:\_\_\_\_\_ Francis Chen

Date:\_\_\_\_\_ 2006/08/22



# TAI-SAW TECHNOLOGY CO., LTD.

No. 3, Industrial 2nd Rd., Ping-Chen Industrial District,  
Taoyuan, 324, Taiwan, R.O.C.

TEL: 886-3-4690038 FAX: 886-3-4697532

E-mail: [tstsales@mail.taisaw.com](mailto:tstsales@mail.taisaw.com) Web: [www.taisaw.com](http://www.taisaw.com)

## SAW Filter 611 MHz

MODEL NO.: TA0326A

REV.NO.:4

### A. MAXIMUM RATING:

1. Input Power Level: 10 dB<sub>m</sub>
2. DC voltage: 3 V
3. Operating Temperature: -20°C to +70°C
4. Storage Temperature: -40°C to +85°C

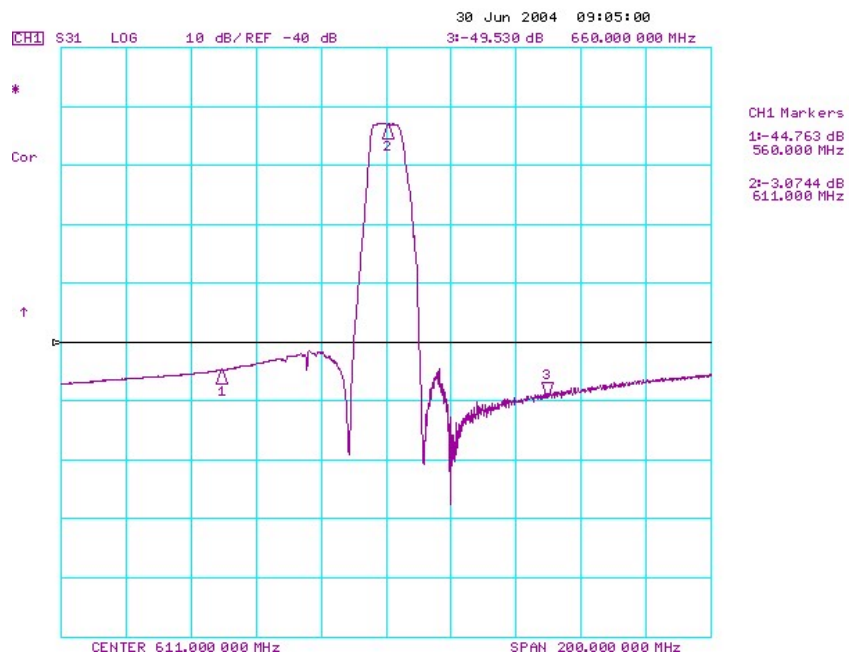
RoHS Compliant  
Lead free  
Lead-free soldering

### B. ELECTRICAL CHARACTERISTICS:

Item	Unit	Min.	Type.	Max.
Center frequency F <sub>c</sub>	MHz	-	611	-
Insertion Loss IL <sub>min</sub> (reference level)	dB	-	2.95	4.5
3dB Bandwidth BW <sub>-3dB</sub>	MHz	7	9.8	-
40dB Bandwidth BW <sub>-40dB</sub>		-	20.5	24
Amplitude Ripple 609.5~ 612.5 MHz	dB	-	0.4	1.3
Rejection:(Reference level from 0dB)				
520 to 560 MHz	dB	38	44	-
660 to 700 MHz	dB	38	45	-
Source impedance Z <sub>s</sub>	Ω	-	50	-
Load impedance Z <sub>L</sub>	Ω	-	50	-

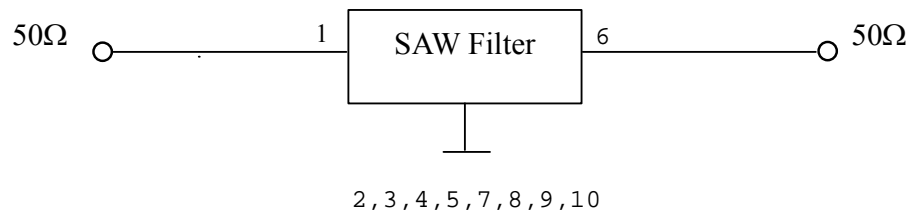
Note: IL<sub>min</sub> is the minimum of the pass band attenuation. The center frequency F<sub>c</sub> is the mean value of the upper and lower frequencies at the 3dB filter attenuation level relative to the IL<sub>min</sub>.

## C. Frequency Characteristics :

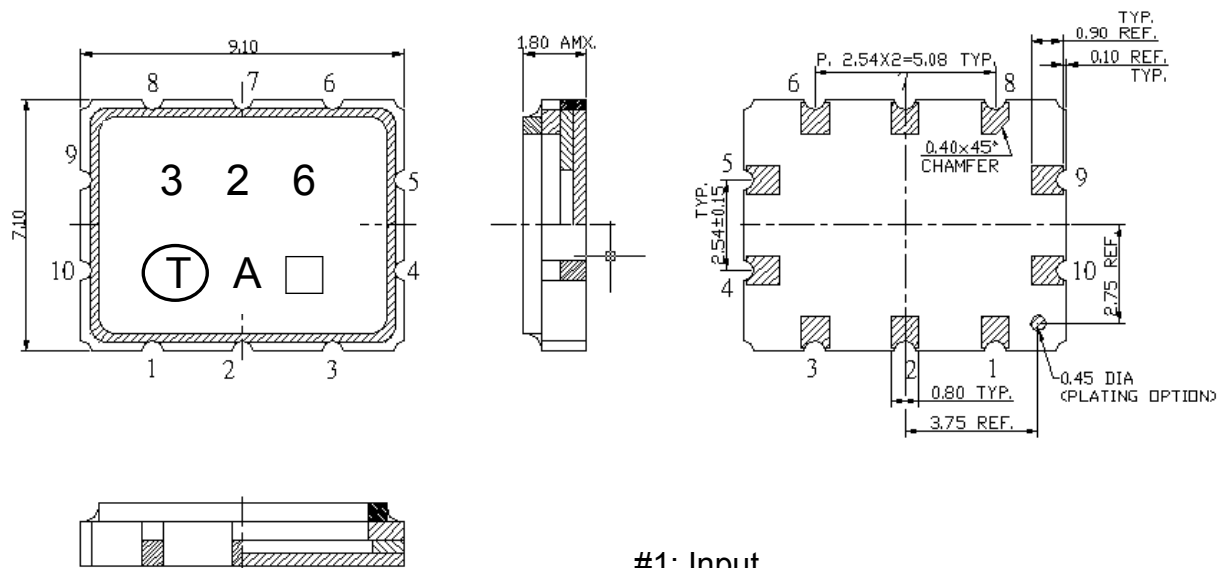


## D. MEASUREMENT CIRCUIT:

HP Network analyzer



## E. OUTLINE DRAWING:



#1: Input

#6: Output

#2,3,4,5,7,8,9,10: Ground

□ : Date Code

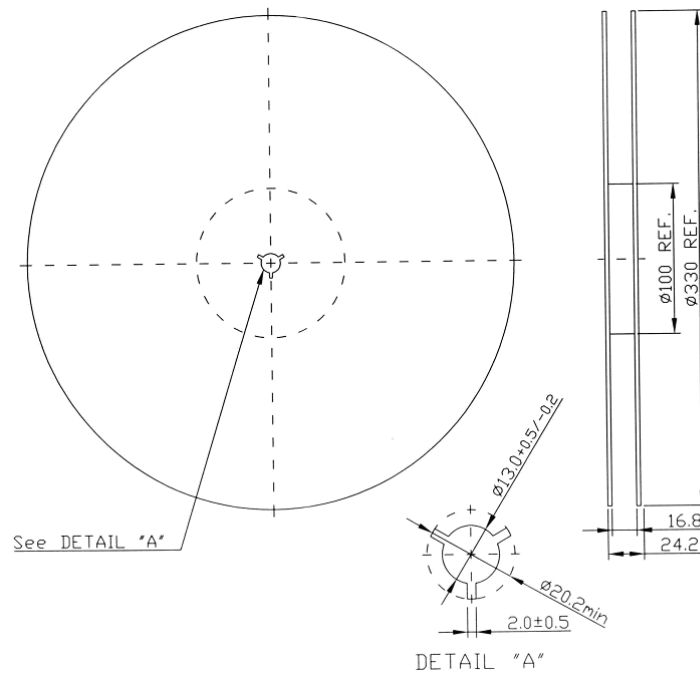
Unit: mm

### Product Year Code

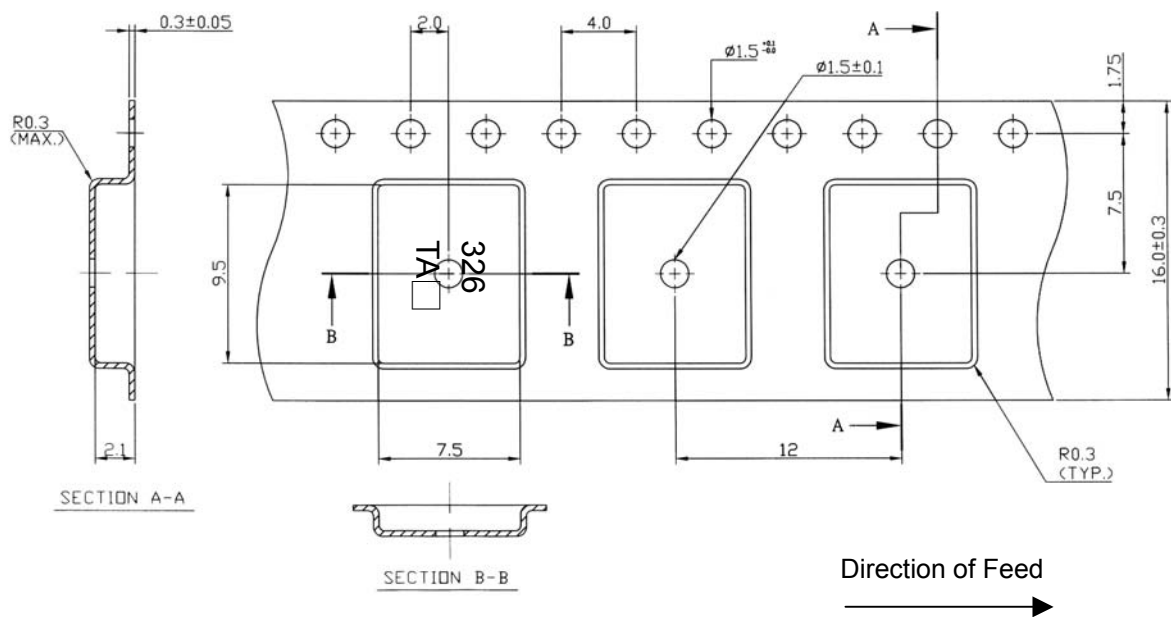
Year	2001 2005	2002 2006	2003 2007	2004 2008
Product Code	A	a	A	a

## F. PACKING:

### 1. REEL DIMENSION



### 2. TAPE DIMENSION



**H. RECOMMENDED REFLOW PROFILE :**

