



TAI-SAW TECHNOLOGY CO., LTD.

No. 3, Industrial 2nd Rd., Ping-Chen Industrial District,
Tayuan, 324, Taiwan, R.O.C.

TEL: 886-3-4690038 FAX: 886-3-4697592

E-mail: tetsales@mail.taisaw.com Web: www.taisaw.com

Approval Sheet For Product Specification

Issued Date: Oct . 31 . 2008

Product Name: SAW Filter 159.0125MHz SMD 7.0x5.0 mm

TST Parts No.:TA0942A

Customer Parts No.: _____

| |
|---------------------|
| Company: _____ |
| Division: _____ |
| Approved by : _____ |
| Date: _____ |

Checked by: Anne Chen 

Approval by: Francis Chen 

Date: 2008/10/31



TAI-SAW TECHNOLOGY CO., LTD.

No. 3, Industrial 2nd Rd., Ping-Chen Industrial District,
Taoyuan, 324, Taiwan, R.O.C.

TEL: 886-3-4690038 FAX: 886-3-4697532

E-mail: tstsales@mail.taisaw.com Web: www.taisaw.com

SAW Filter 159.0125 MHz

MODEL NO.: TA0942A

REV. NO.:1

A. MAXIMUM RATING:

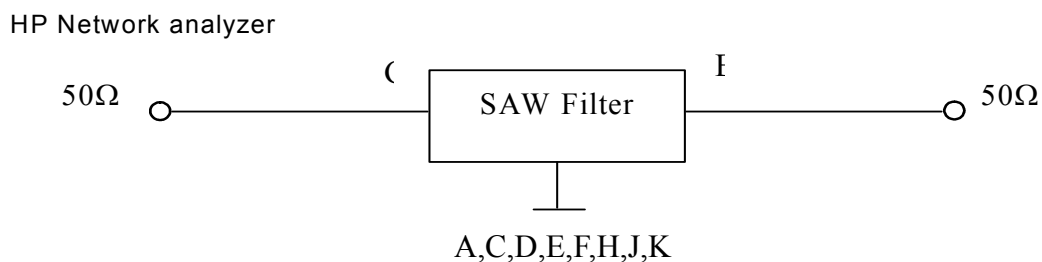
1. Input Power Level: 10 dB_m
2. DC voltage: 5 V
3. Operating Temperature: -40°C to +70°C
4. Storage Temperature: -40°C to +85°C

B. ELECTRICAL CHARACTERISTICS:

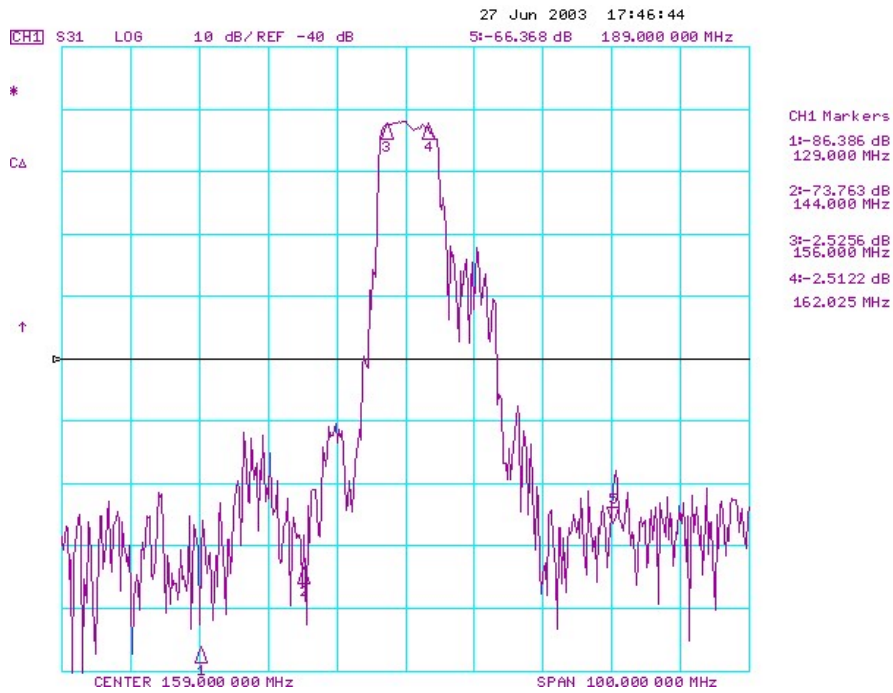
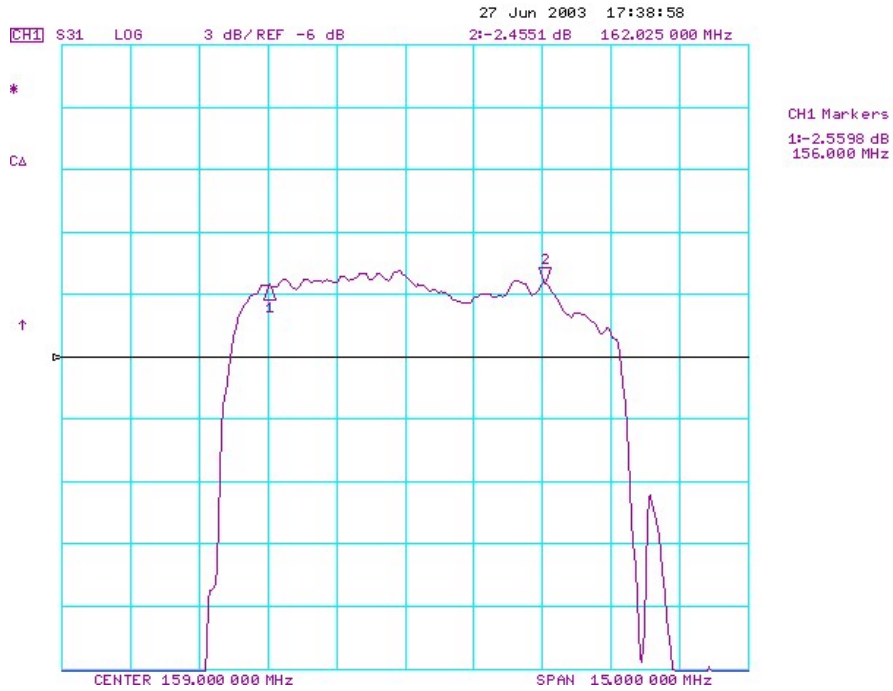
| Item | | Specification | | | |
|---|-------------------------------------|---------------|-------|----------|------|
| | | Unit | Min. | Typ. | Max. |
| Center Frequency | F _c | MHz | - | 159.0125 | - |
| Insertion Loss | IL _{min} (reference level) | dB | - | 1.85 | 2.8 |
| Bandwidth | BW _{-3dB} | MHz | 6.025 | 8.2 | - |
| Absolute Attenuation(reference to IL _{min} dB) | | | | | |
| F _c -50 ~ F _c -30 | MHz | dB | 42 | 57 | - |
| F _c -30 ~ F _c -15 | MHz | dB | 36 | 43 | - |
| F _c +30 ~ F _c +50 | MHz | dB | 42 | 57 | - |
| Source impedance | Z _s | Ω | - | 50 | - |
| Load impedance | Z _L | Ω | - | 50 | - |

Note: IL_{min} is the minimum of the pass band attenuation. The center frequency F_c is the mean value of the upper and lower frequencies at the 3dB filter attenuation level relative to the IL_{min}.

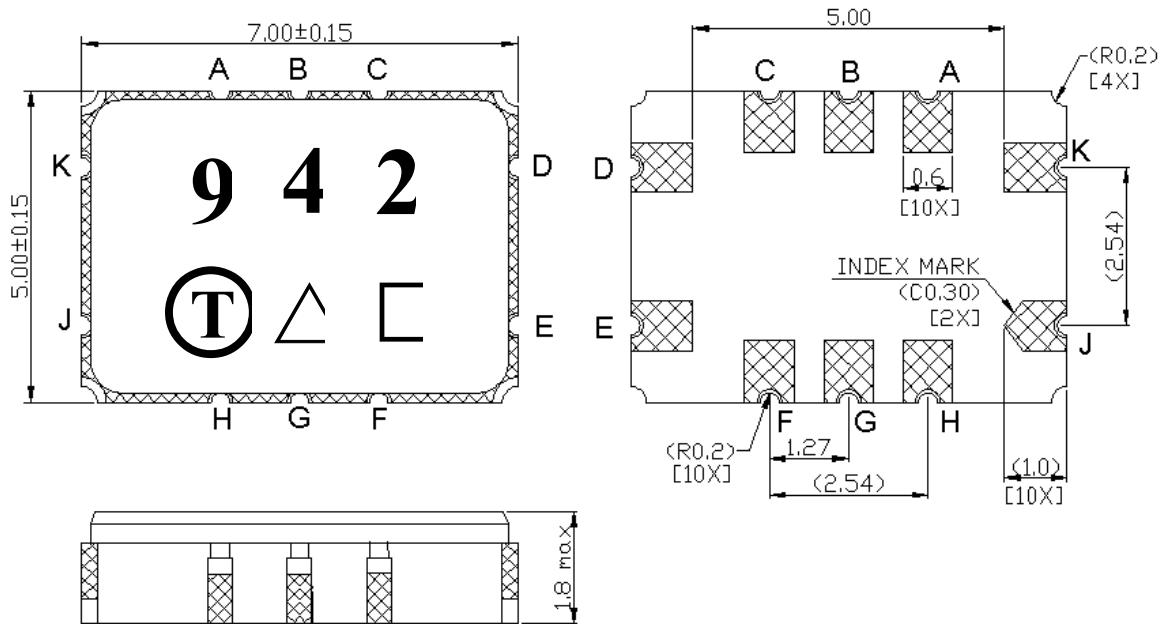
MEASUREMENT CIRCUIT:



C. Frequency Characteristics :



D. OUTLINE DRAWING:



Pin configuration

#G : Input

#B : Output Unit : mm

#A,C,D,E,F,H,J,K : grounded

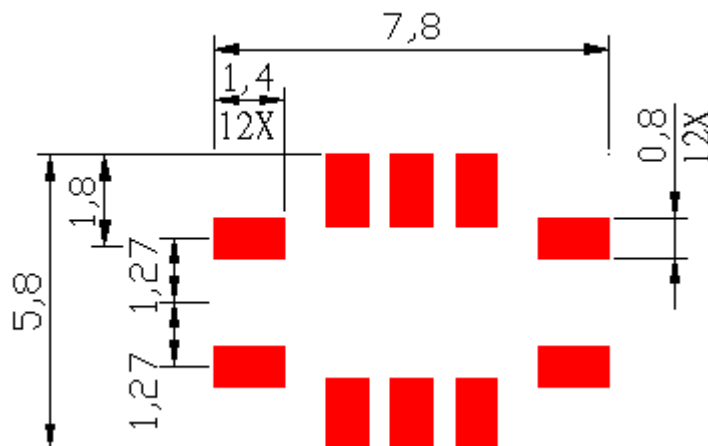
\triangle =Year Code

\square =Date Code

Product Year Code

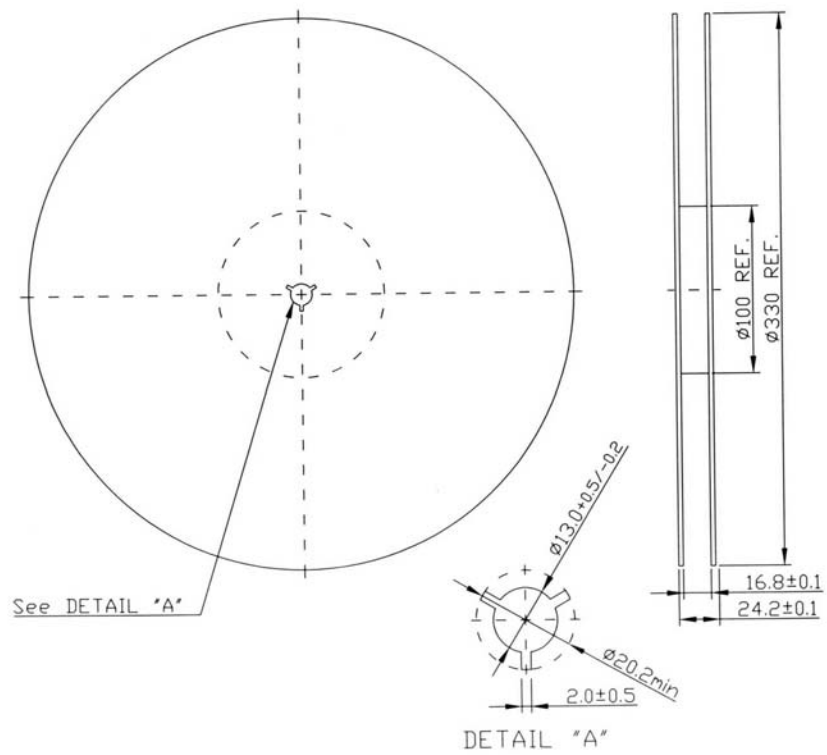
| Year | 2001 | 2002 | 2003 | 2004 |
|--------------|------|------|----------|----------|
| | 2005 | 2006 | 2007 | 2008 |
| Product Code | A | a | <u>A</u> | <u>a</u> |

F. PCB Footprint :

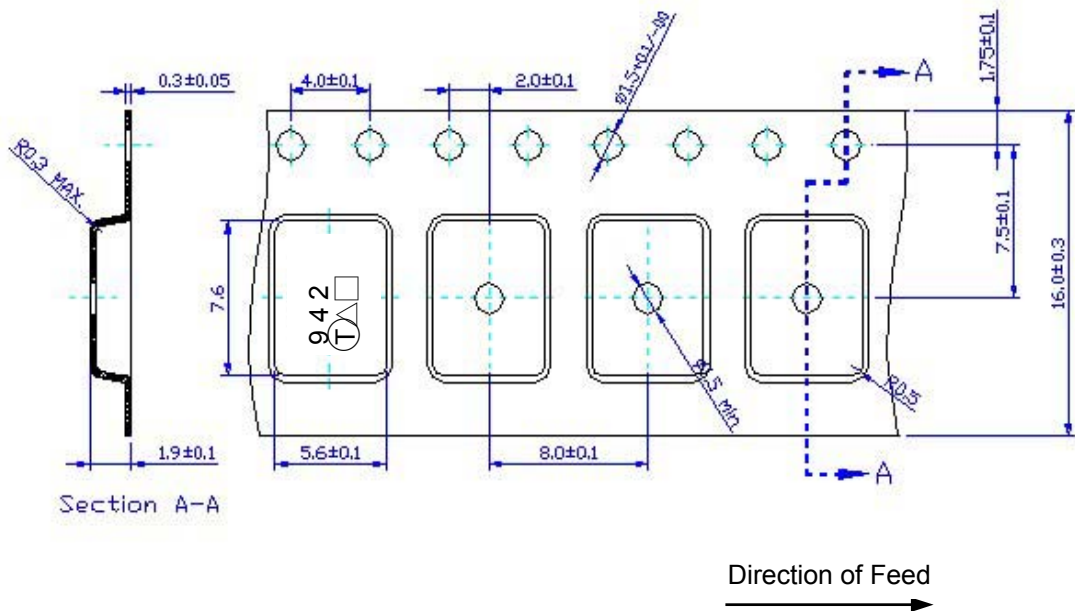


G. PACKING:

1. REEL DIMENSION



2. TAPE DIMENSION



H. RECOMMENDED REFLOW PROFILE :

