



# TAI-SAW TECHNOLOGY CO., LTD.

No. 3, Industrial 2nd Rd., Ping-Chen Industrial District,  
Taoyuan, 324, Taiwan, R.O.C.

TEL: 886-3-4690038 FAX: 886-3-4697532

E-mail: [tstsales@mail.taisaw.com](mailto:tstsales@mail.taisaw.com) Web: [www.taisaw.com](http://www.taisaw.com)

## Approval Sheet For Product Specification

Issued Date:

Product Name: 44MHz IF SAW Filter (BW=4.6 MHz)

TST Parts No.: TB0419A

Customer Parts No.: \_\_\_\_\_

Company: _____
Division: _____
Approved by : _____
Date: _____

Checked by: \_\_\_\_\_ Andy Yu

Approval by: \_\_\_\_\_ Francis Chen

Date: \_\_\_\_\_ 2007/03/27



# TAI-SAW TECHNOLOGY CO., LTD.

No.3, Industrial 2nd Rd., Ping-Chen Industrial District, Taoyuan, Taiwan, R.O.C.

TEL: 886-3-4690038 FAX: 886-3-4697532

E-mail: [tstsales3@mail.taisaw.com](mailto:tstsales3@mail.taisaw.com) Web: [www.taisaw.com](http://www.taisaw.com)

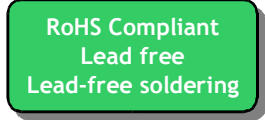
SAW Filter 44MHz (SMD 13.3×6.5 mm)

Model No.: TB0419A

Rev. No.:1.0

## A. MAXIMUM RATING:

1. Input Power Level: 10 dBm
2. Operating Temperature: -30°C to +80°C
3. Storage Temperature: -40°C to +85°C

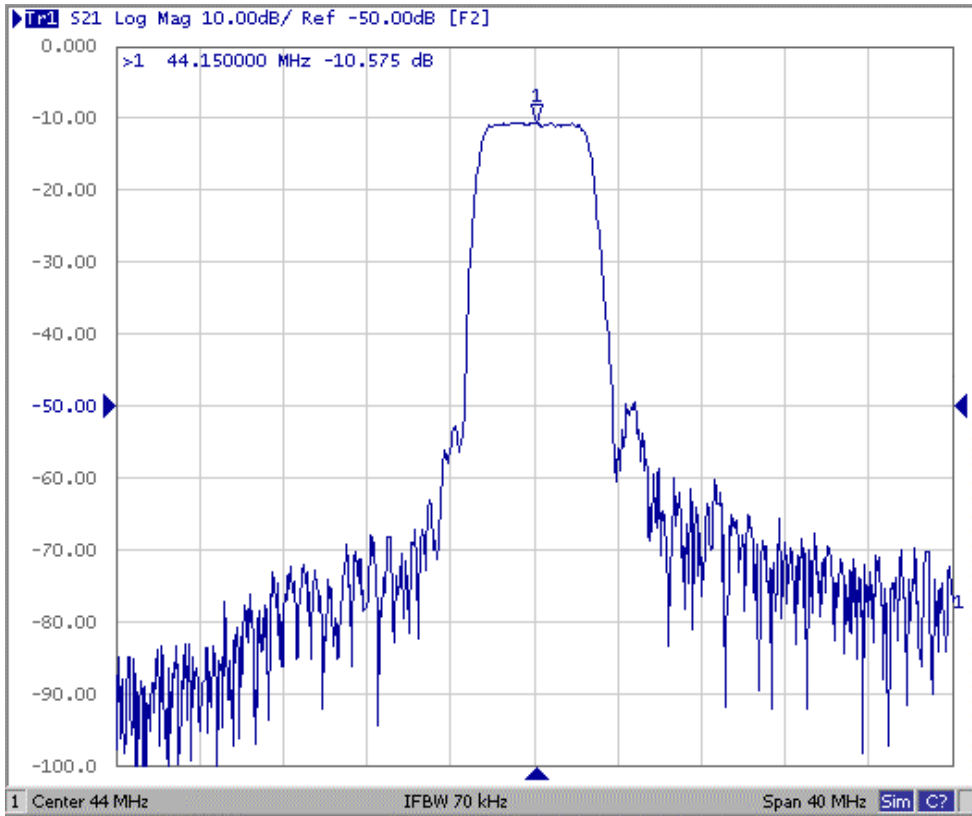


## B. Characteristics :

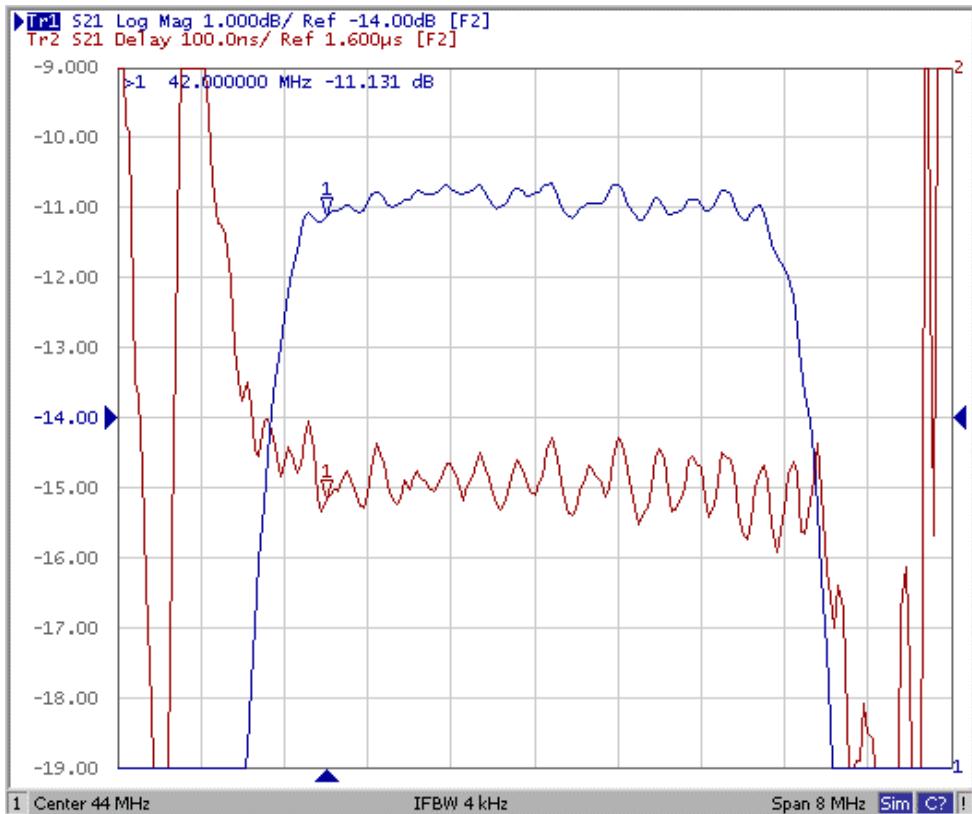
Item	Unit	Min.	Type.	Max.
Center frequency, <b>Fc</b>	MHz	-	44	-
Insertion Loss, <b>IL</b>	dB	-	11.5	16
1 dB Bandwidth	MHz	-	4.7	-
3 dB Bandwidth	MHz	4.6	5.1	
Pass band Ripple <b>Fc±2.0MHz</b>	dB	-	0.6	1.0
Stopband Rejection (ref: Max IL)				
Relative Attenuation <b>Fc±2.88MHz</b>	dB	-	8	-
Relative Attenuation <b>Fc±5.0MHz</b>	dB	35	42	-
Relative Attenuation <b>25MHz to 38MHz</b>	dB	40	53	-
Relative Attenuation <b>50MHz to 61.5MHz</b>	dB	40	48	-
Temp Coefficient	ppm/C	-	-94	-

### C. Frequency Characteristics :

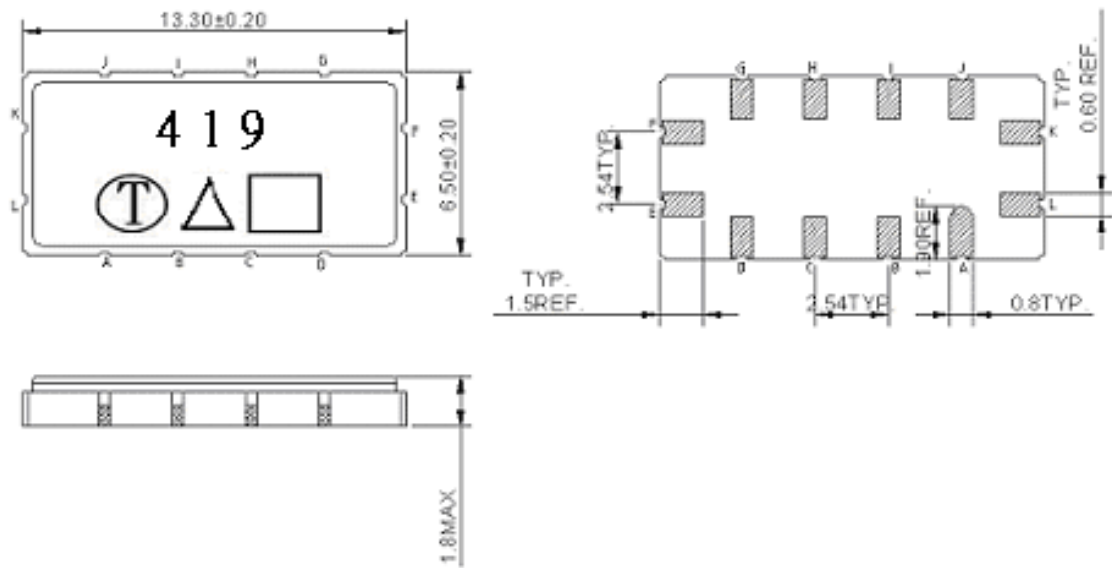
#### (1) Frequency Response



#### (2) Passband response and Group Delay Variation:



**D. Outline Drawing:**



Pin K=L: RF input

Pin E=F: RF output

Pin A, B, C, D, G, H, I, J: To be Ground

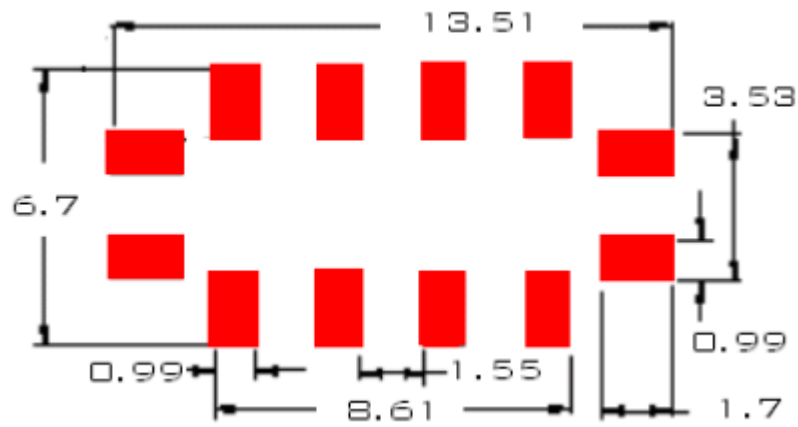
□ : Week Code (Follow the table from planner each year)

Unit : mm

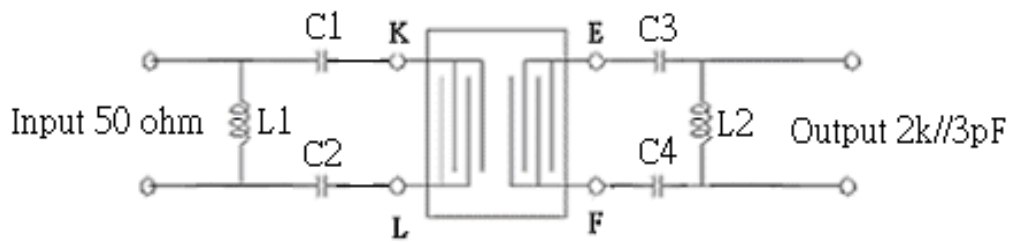
△ : Product / Year Code

Year	2005 2009	2006 2010	2007 2011	2008 2012
Product Code	B	b	<u>B</u>	<u>b</u>

**E. PCB Footprint:**



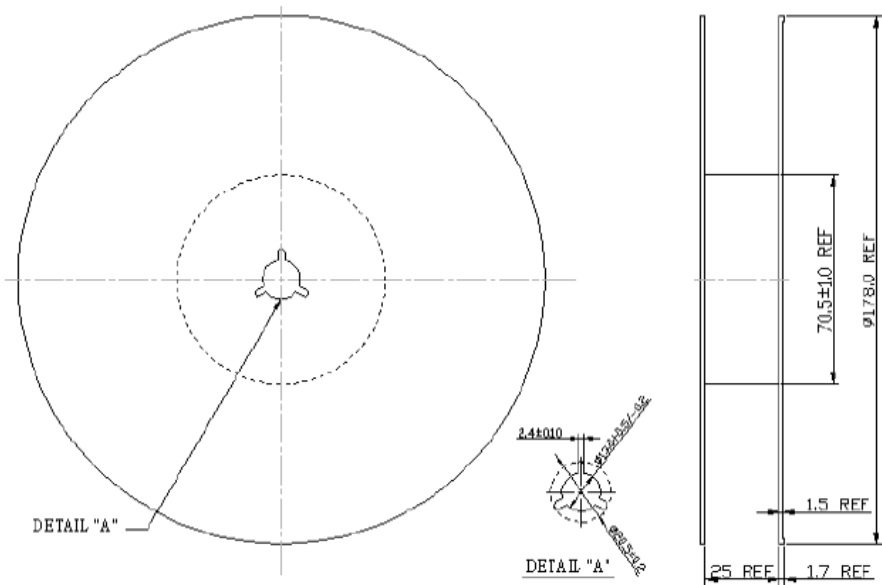
**F. Matching Circuit:**



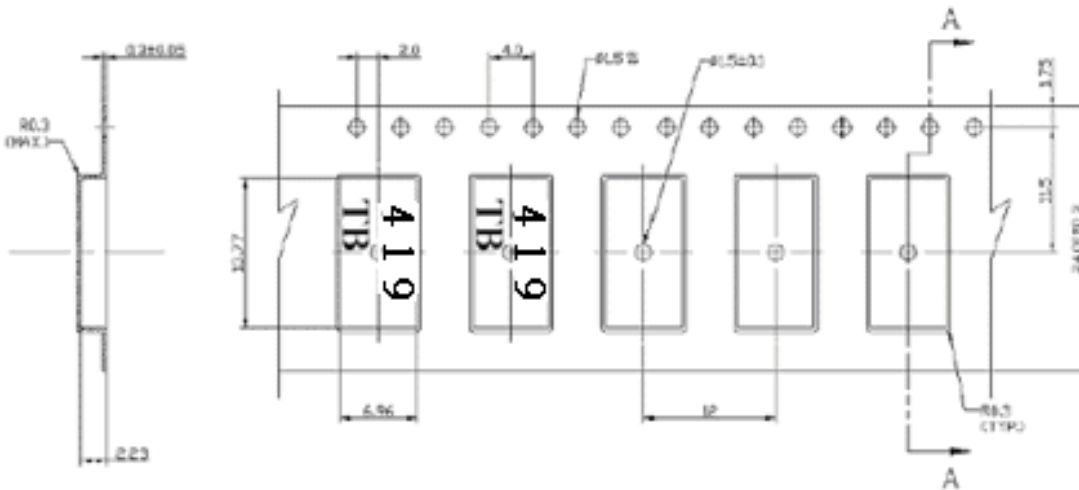
$C1=C2=50\text{pF}$ ,  $L1=300\text{nH}$ ,  $C3=C4=27\text{pF}$ ,  $L2=1000\text{nH}$

**G. Packing:**

(1). REEL DIMENSION:



(2). TYPE DIMENSION:



## H. Recommended Reflow Profile:

