



TAI-SAW TECHNOLOGY CO., LTD.

No. 3, Industrial 2nd Rd., Ping-Chen Industrial District,
Taoyuan, 324, Taiwan, R.O.C.

TEL: 886-3-4690038 FAX: 886-3-4697532

E-mail: tstsales@mail.taisaw.com Web: www.taisaw.com

Product Specifications Approval Sheet

Product Name: SAW Filter 1737.5 MHz BW 85 MHz SMD 3.0X3.0 mm

TST Parts No.: TA2698AA3112

Customer Parts No.: _____

Company: _____
Division: _____
Approved by : _____
Date: _____

Checked by: _____ Sam Lin *Sam Lin*

Approval by: _____ Andy Yu *Andy Yu*

Date: _____ 2020/10/22

1. Customer signed back is required before TST can proceed with sample build and receive orders.
2. Orders received without customer signed back will be regarded as agreement on the specifications.
3. Any specifications changes must be approved upon by both parties and a new revision of specifications shall be released to reflect the changes



TAI-SAW TECHNOLOGY CO., LTD.

No. 3, Industrial 2nd Rd., Ping-Chen Industrial District,
Taoyuan, 324, Taiwan, R.O.C.

TEL: 886-3-4690038 FAX: 886-3-4697532

E-mail: tstsales@mail.taisaw.com Web: www.taisaw.com

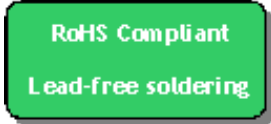
SAW Filter 1737.5 MHz BW 85 MHz SMD 3.0X3.0 mm

MODEL NO.:TA2698AA3112

REV. NO.:1.0

A. MAXIMUM RATING:

1. Input Power Level: 15 dBm
2. DC Voltage : 0 V
3. Operating Temperature: +0°C to +85°C
4. Storage Temperature: -40°C to +85°C
5. Moisture Sensitive Level: MSL 1



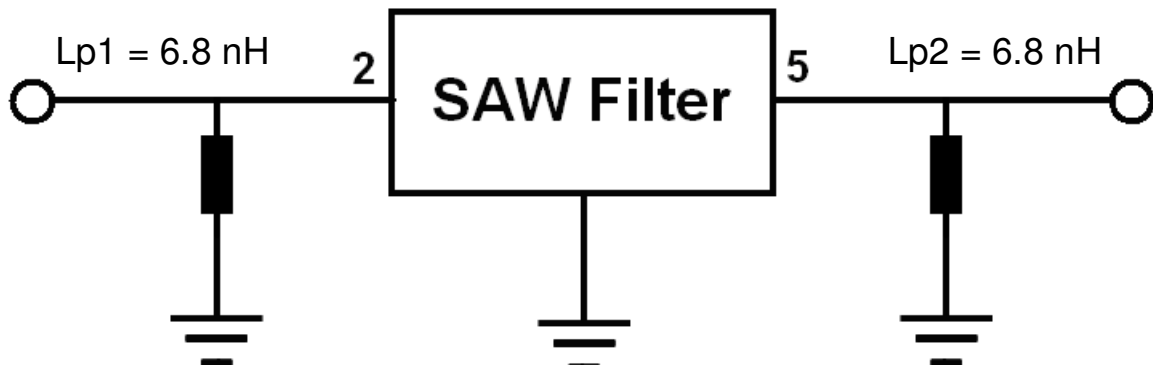
Electrostatic Sensitive Device (ESD)

B. ELECTRICAL CHARACTERISTICS:

- Terminating source impedance (single) : $Z_s = 50 \Omega$
 Terminating load impedance (single) : $Z_L = 50 \Omega$

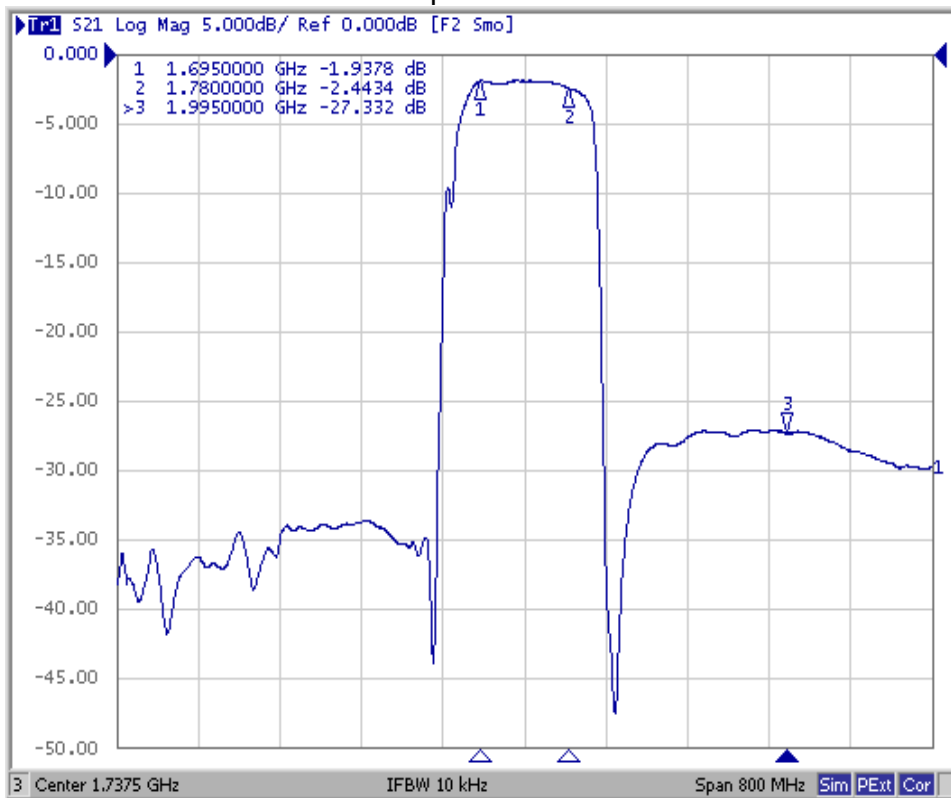
Item	Unit	Min.	Type.	Max.
Center Frequency	MHz	-	1737.5	-
Insertion Loss (1695 ~ 1780 MHz)	dB	-	2.5	3.5
Amplitude ripple (1695 ~ 1780 MHz)	dB	-	0.6	2.0
Return Loss (1695 ~ 1780 MHz)	dB	8	11	-
Attenuation				
10 ~ 1320 MHz	dB	30	40	-
1995 ~ 2200 MHz	dB	22	27	-
2200 ~ 3000 MHz	dB	25	29	-
Temperature Coefficient of Frequency	ppm/C°	-	-36	-

C. TEST CIRCUIT:

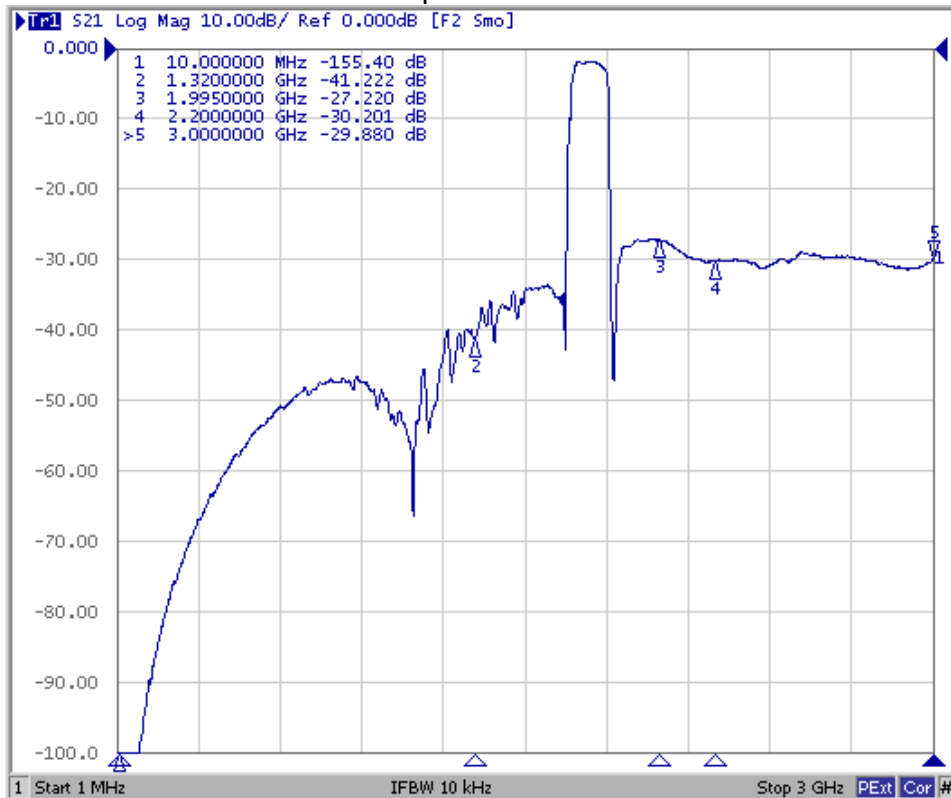


E. Frequency Characteristics:

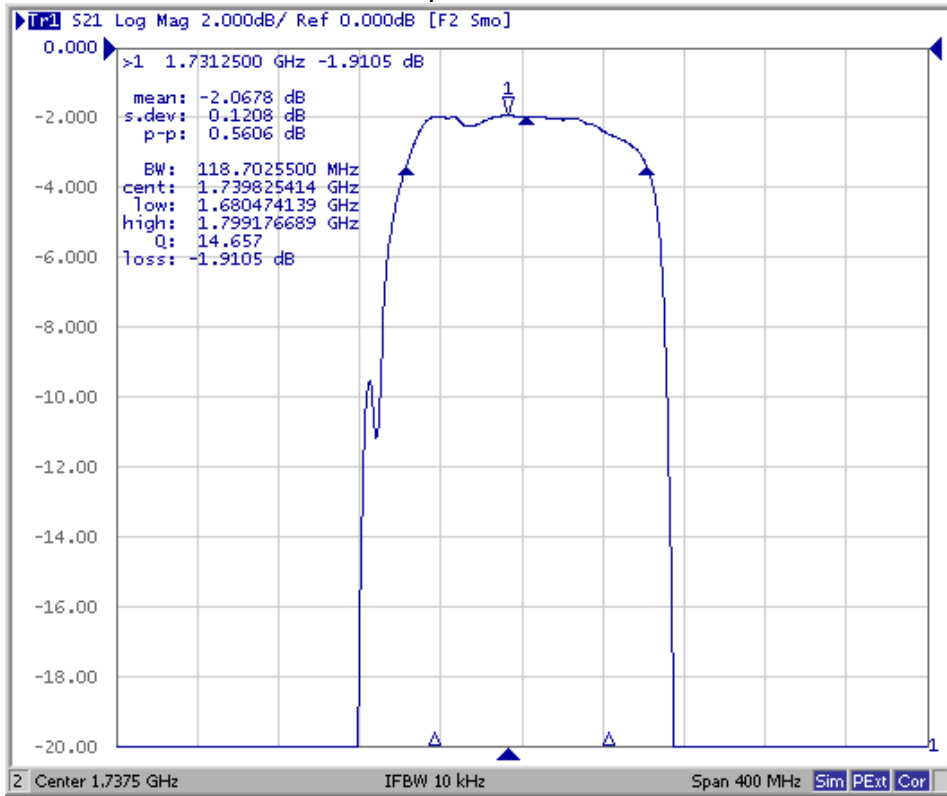
Span 800 MHz



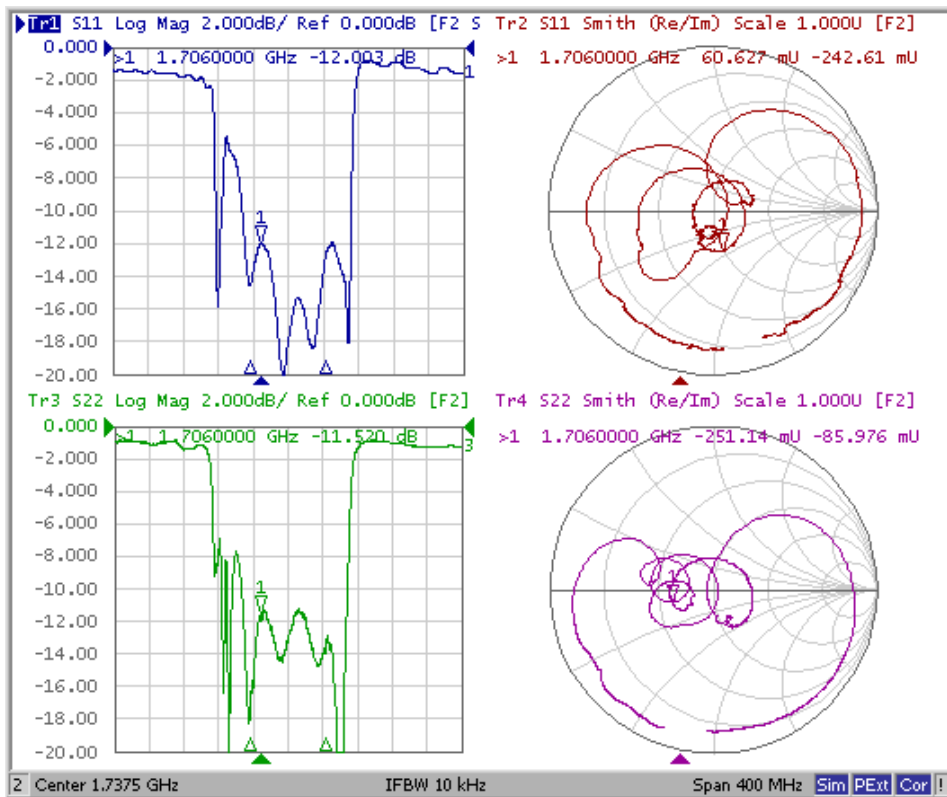
Span 3000 MHz



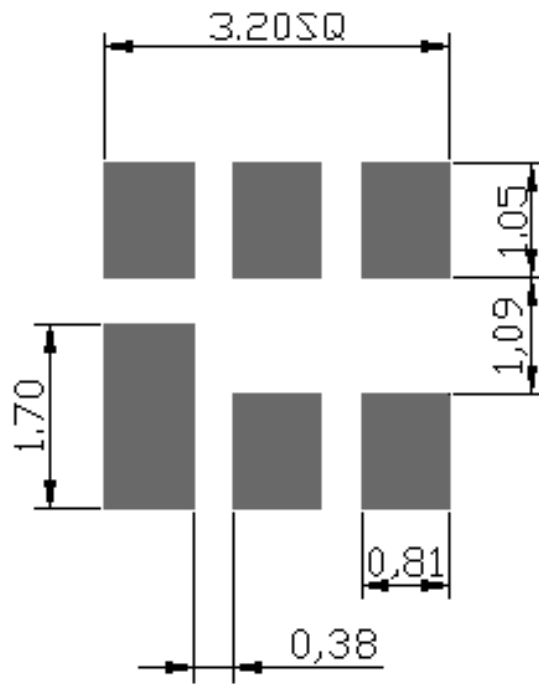
Span 100 MHz



Reflection Characteristic



F. PCB FOOTPRINT:



H. RECOMMENDED REFLOW PROFILE :

1. Preheating shall be fixed at 150~180°C for 60~90 seconds.
2. Ascending time to preheating temperature 150°C shall be 30 seconds min.
3. Heating shall be fixed at 220°C for 50~80 seconds and at 260°C +0/-5°C peak (20~40sec).
4. Time: 2 times.

