



TAI-SAW TECHNOLOGY CO., LTD.

No. 3, Industrial 2nd Rd., Ping-Chen Industrial District,
Taoyuan, 324, Taiwan, R.O.C.

TEL: 886-3-4690038 FAX: 886-3-4697532

E-mail: tstsales@mail.taisaw.com Web: www.taisaw.com

Approval Sheet For Product Specification

Issued Date: 2006/03/15

Product Name: 44MHz IF SAW Filter (BW=1.7 MHz)

TST Parts No.: TB0362A

Customer Parts No.: _____

Company: _____
Division: _____
Approved by : _____
Date: _____

Checked by: _____ Andy Yu

Approval by: _____ Francis Chen

Date: _____ 2006/10/05



TAI-SAW TECHNOLOGY CO., LTD.

No.3, Industrial 2nd Rd., Ping-Chen Industrial District, Taoyuan, Taiwan, R.O.C.

TEL: 886-3-4690038 FAX: 886-3-4697532

E-mail: tstsales3@mail.taisaw.com Web: www.taisaw.com

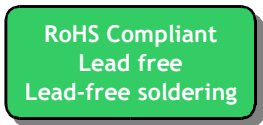
SAW Filter 44MHz (SMD 13.3×6.5 mm)

Model No.: TB0362A

Rev. No.:2.0

A. MAXIMUM RATING:

1. Input Power Level: 10 dBm
2. Operating Temperature: -40°C to +85°C
3. Storage Temperature: -40°C to +85°C

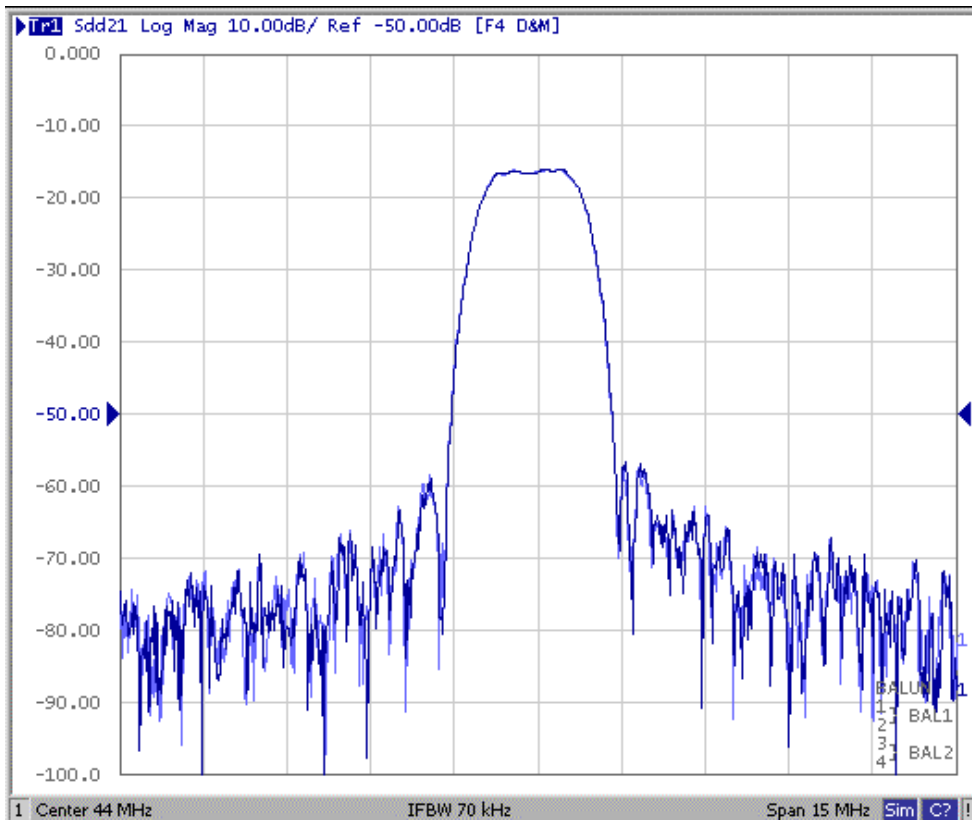


B. Characteristics :

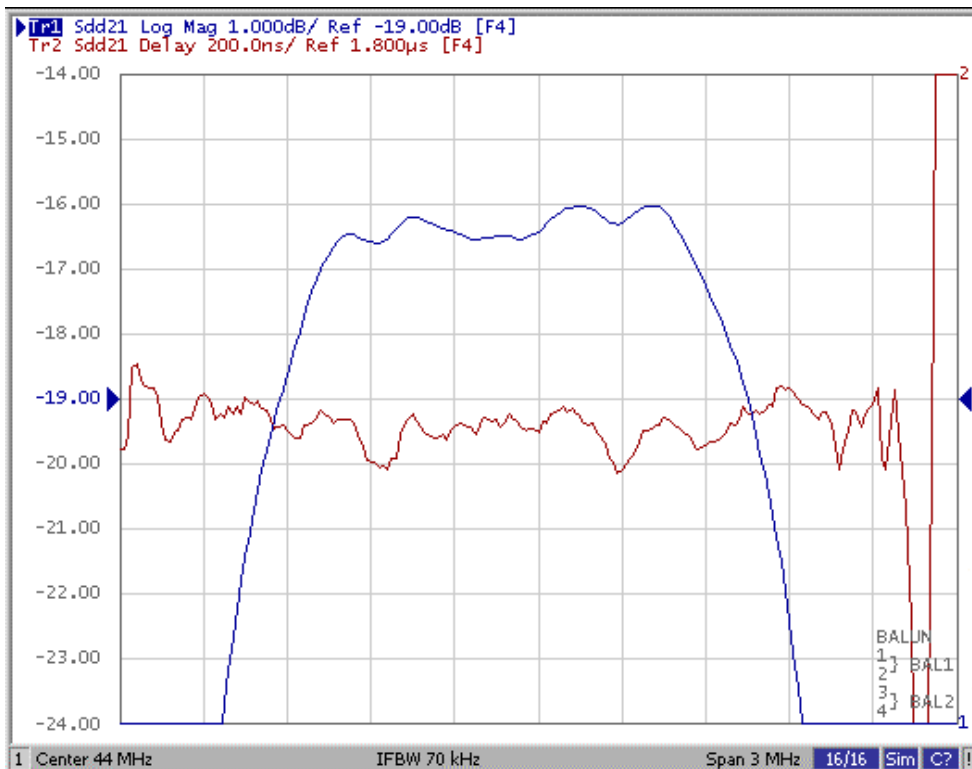
Item	Unit	Min.	Type.	Max.
Center frequency, Fc	MHz	-	44	-
Insertion Loss, IL	dB	-	16	17.5
3 dB Bandwidth	MHz	1.7	1.8	
Pass band Ripple Fc±0.45MHz	dB	-	0.6	1.0
Stopband Rejection (ref: Max IL)				
Relative Attenuation Fc±0.96MHz	dB	4	5.5	
Relative Attenuation Fc±1.0MHz	dB	5	6.7	
Relative Attenuation Fc±1.75MHz	dB	38	42	
Relative Attenuation 26.5MHz to 42.5MHz	dB	38	41	
Relative Attenuation 46.5MHz to 61.5MHz	dB	38	52	

C. Frequency Characteristics :

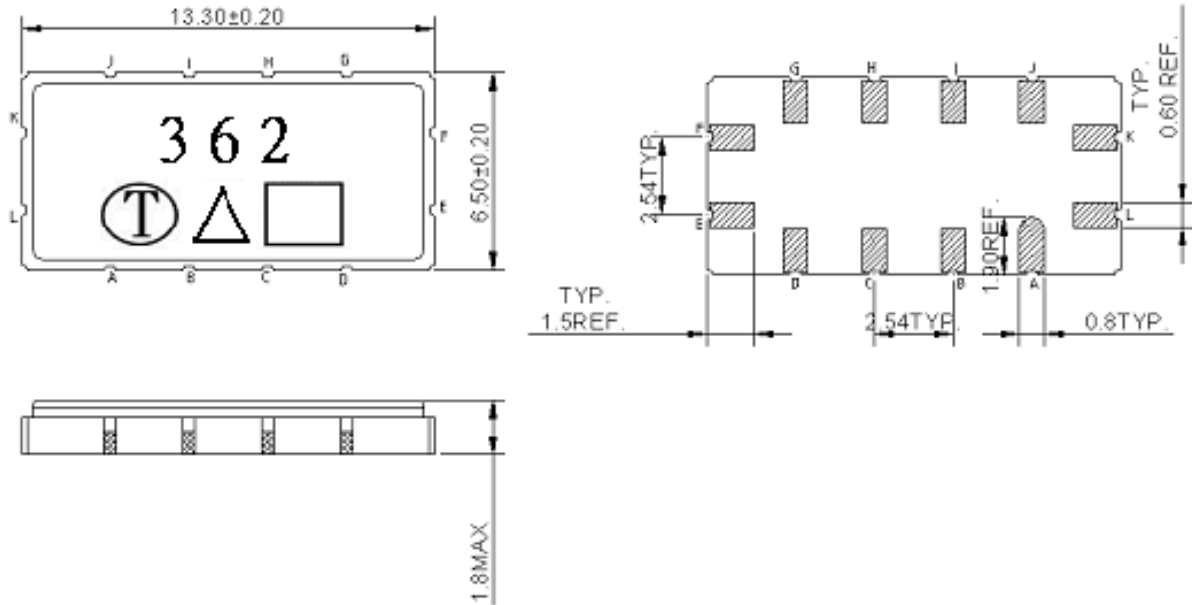
(1) Frequency Response



(2) Passband response and Group Delay Variation:



D. Outline Drawing:



Pin K=L: RF input

Pin E=F: RF output

Pin A, B, C, D, G, H, I, J: To be Ground

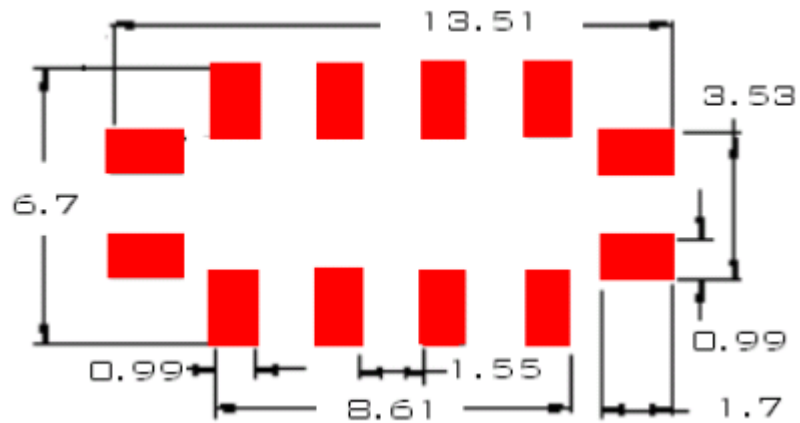
□ : Week Code (Follow the table from planner each year)

Unit : mm

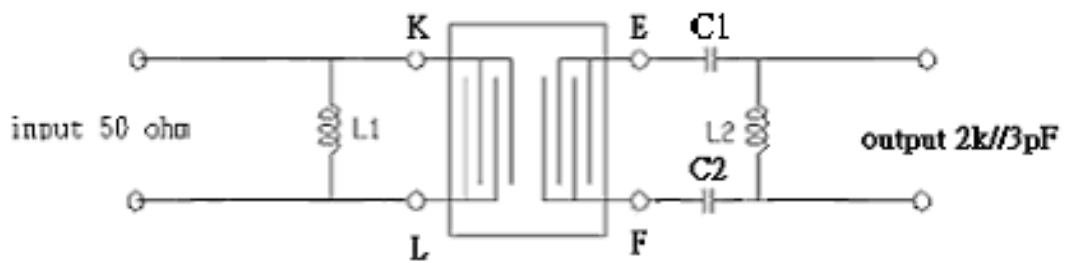
△ : Product / Year Code

Year	2005 2009	2006 2010	2007 2011	2008 2012
Product Code	B	b	<u>B</u>	<u>b</u>

E. PCB Footprint:



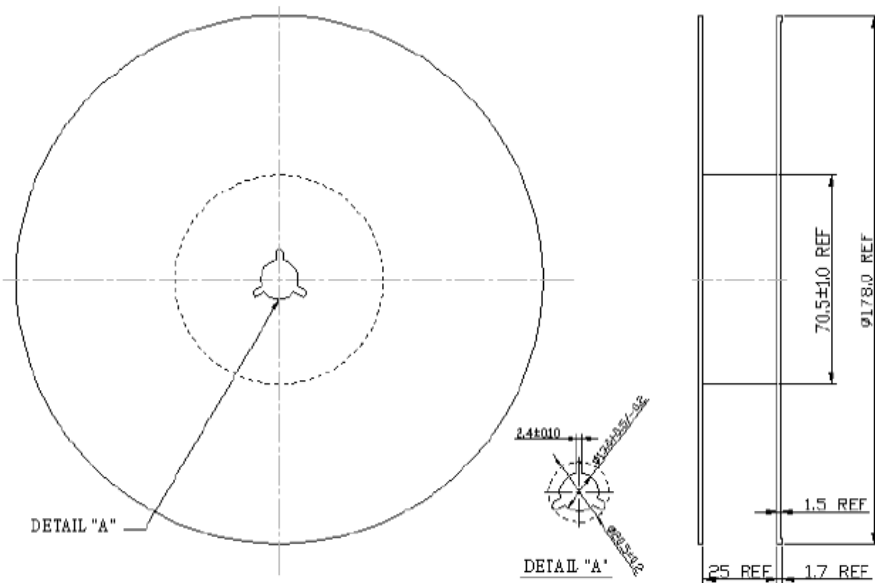
F. Matching Circuit:



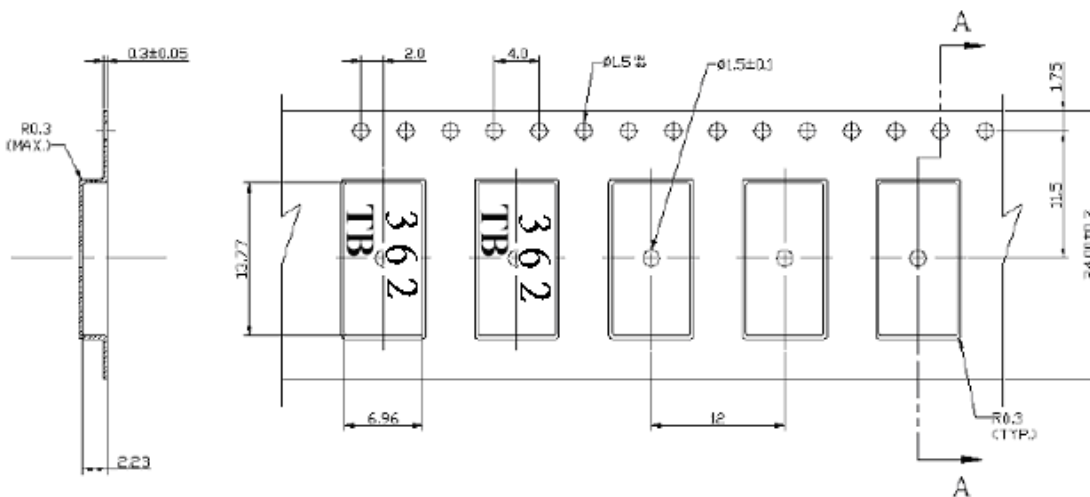
$L1=270\text{nH}$, $C1=C2=59\text{pF}$, $L2=560\text{nH}$

G. Packing:

(1). REEL DIMENSION:



(2). TYPE DIMENSION:



H. Recommended Reflow Profile:

