



TAI-SAW TECHNOLOGY CO., LTD.

No. 3, Industrial 2nd Rd., Ping-Chen Industrial District,
Taoyuan, 324, Taiwan, R.O.C.

TEL: 886-3-4690038 FAX: 886-3-4697532

E-mail: tstsales@mail.taisaw.com Web: www.taisaw.com

Product Specifications Approval Sheet

Product Name: 44MHz IF SAW Filter (BW=3.4 MHz)

TST Parts No.: TB0363A

Customer Parts No.: _____

Customer signature required
Company: _____
Division: _____
Approved by : _____
Date: _____

Checked by: Kazuma Lee *Kazuma Lee*

Approval by: Andy Yu *Andy Yu*

Date: 2018/12/10

1. Customer signed back is required before TST can proceed with sample build and receive orders.
2. Orders received without customer signed back will be regarded as agreement on the specifications.
3. Any specifications changes must be approved upon by both parties and a new revision of specifications shall be released to reflect the changes



TAI-SAW TECHNOLOGY CO., LTD.

No.3, Industrial 2nd Rd., Ping-Chen Industrial District,
Tao-Yuan, Taiwan, R.O.C.

TEL: 886-3-4690038 FAX: 886-3-4697532

E-mail: tstsales3@mail.taisaw.com Web: www.taisaw.com

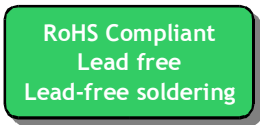
SAW Filter 44MHz (SMD 13.3x6.5 mm)

Model No.: TB0363A

Rev. No.:4.0

A. MAXIMUM RATING:

1. Input Power Level: 10 dBm
2. Operating Temperature: -40°C to +85°C
3. Storage Temperature: -40°C to +85°C
4. Moisture Sensitivity Level: Level 1 (MSL 1)

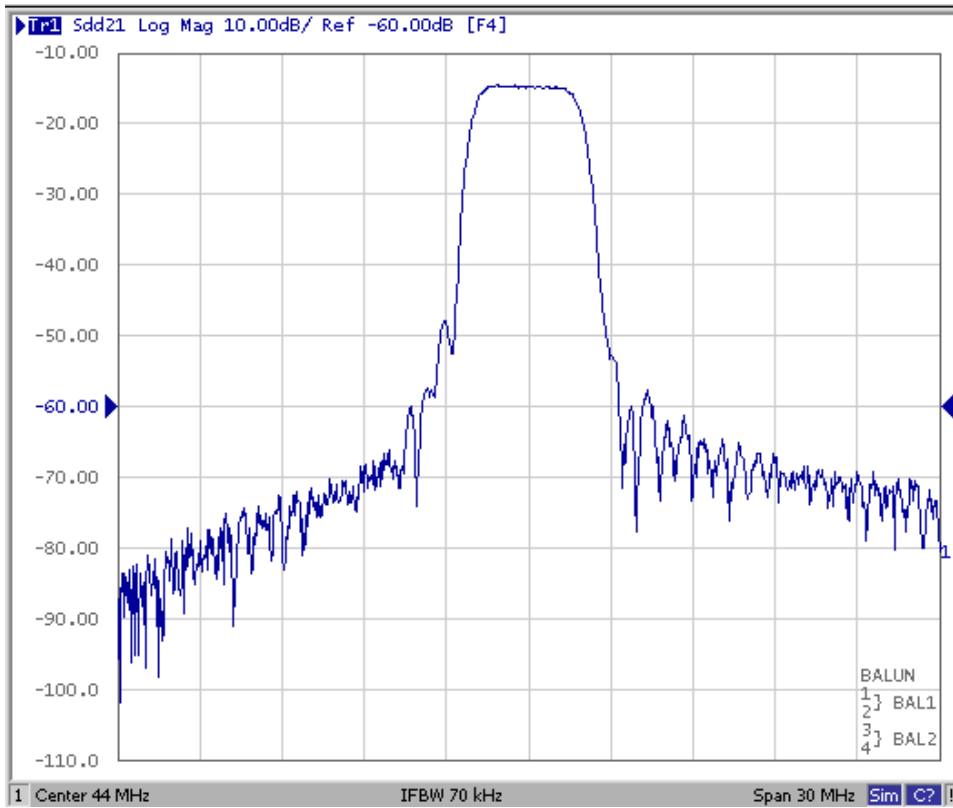


B. ELECTRICAL CHARACTERISTICS:

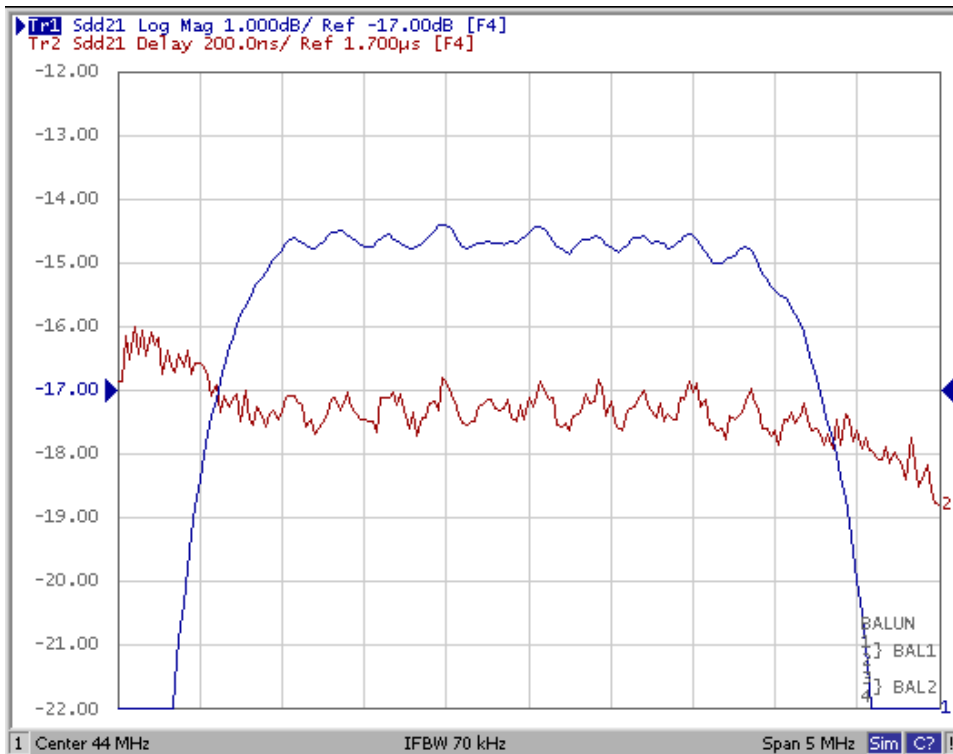
Item	Unit	Min.	Type.	Max.
Center frequency, Fc	MHz	-	44	-
Insertion Loss, IL	dB	-	14	16
3 dB Bandwidth	MHz	3.4	3.8	
Pass band Ripple Fc±1.25MHz	dB	-	0.6	1.0
Stopband Rejection (ref: Max IL)				
Relative Attenuation Fc±1.85MHz	dB	1.9	2.5	
Relative Attenuation Fc±2MHz	dB	3	4.2	
Relative Attenuation Fc±3.5MHz	dB	38	42	
Relative Attenuation 26.5MHz to 40.5MHz	dB	40	47	
Relative Attenuation 47.5MHz to 61.5MHz	dB	38	41	

C. FREQUENCY CHARACTERISTICS:

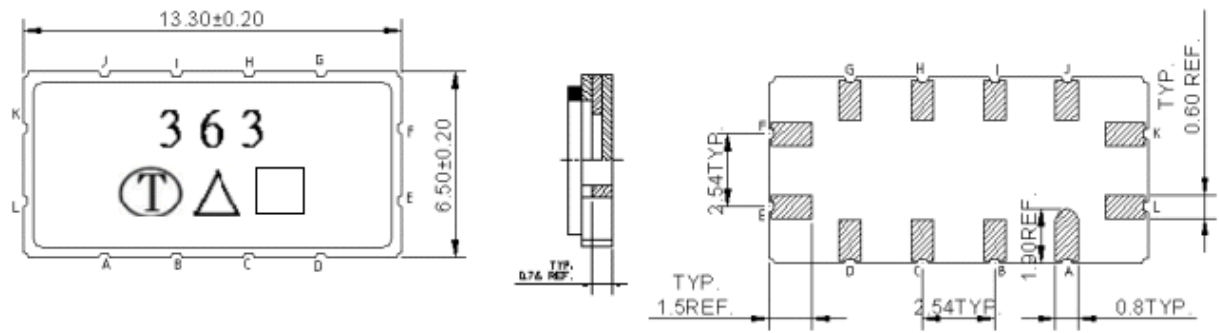
(1) Frequency Response: (span:30MHz)



(2) Passband response and Group Delay Variation: (span:5MHz)



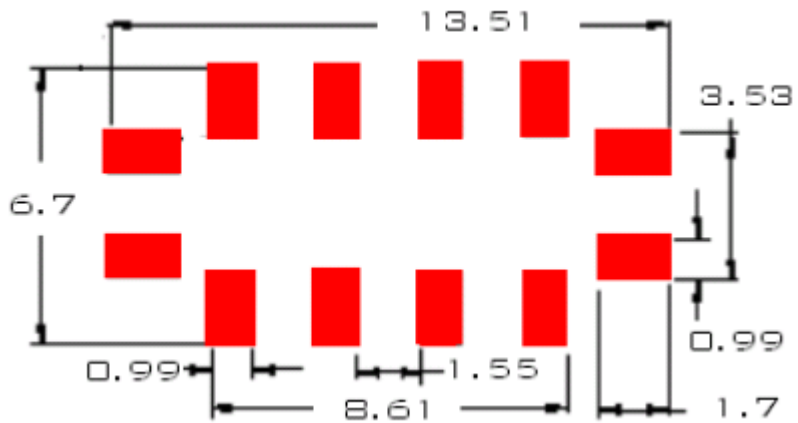
D. OUTLINE DRAWING:



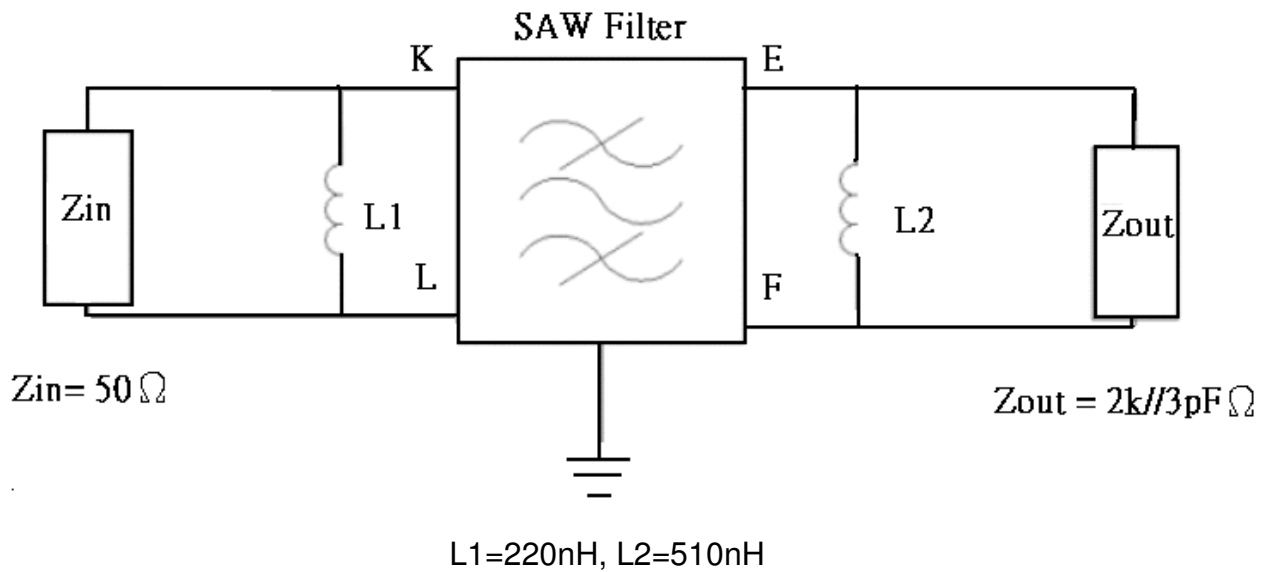
- Pin K: RF Balance input +
- Pin L: RF Balance input -
- Pin E: RF Balance output +
- Pin F: RF Balance output -
- Pin A, B, C, D, G, H, I, J: To be Ground
- : Week Code (Follow the table from planner each year)
- Unit : mm
- △ : Product / Year Code

Year	2017 2021	2018 2022	2019 2023	2020 2024
Product Code	B	b	<u>B</u>	<u>b</u>

E. PCB FOOTPRINT:

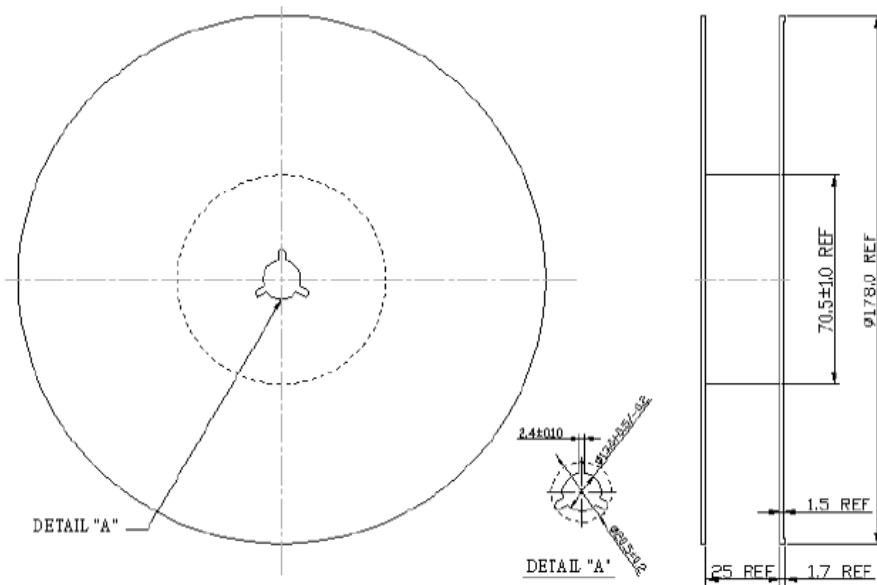


F. MATCHING CIRCUIT:

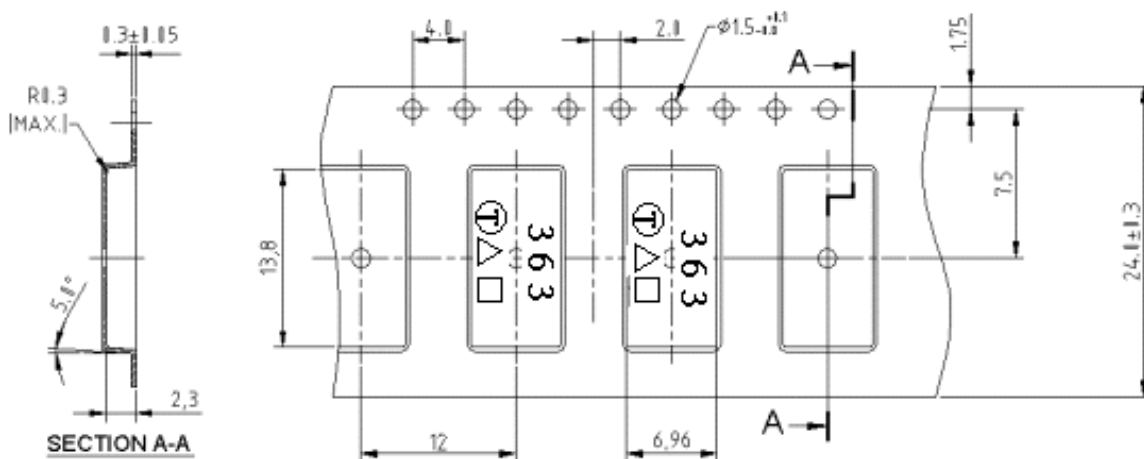


G. PACKING:

(1). REEL DIMENSION:



(2). TYPE DIMENSION:



H. RECOMMENDED REFLOW PROFILE:

