



TAI-SAW TECHNOLOGY CO., LTD.

No. 3, Industrial 2nd Rd., Ping-Chen Industrial District,
Taoyuan, 324, Taiwan, R.O.C.

TEL: 886-3-4690038 FAX: 886-3-4697532

E-mail: tstsales@mail.taisaw.com Web: www.taisaw.com

Product Specifications Approval Sheet

Product Description: Tx Low Pass Filter 699~960 MHz SMD 1.6X0.8 mm

TST Parts No.: TL0015A

Customer Parts No.: _____

Customer signature required
Company: _____
Division: _____
Approved by : _____
Date: _____

Checked by: _____ Nina Chen *Nina Chen*

Approval by: _____ Kazuma Lee *Kazuma Lee*

Date: _____ 2022/08/01

1. Customer signed back is required before TST can proceed with sample build and receive orders.
2. Orders received without customer signed back will be regarded as agreement on the specifications.
3. Any specifications changes must be approved upon by both parties and a new revision of specifications shall be released to reflect the changes.



TAI-SAW TECHNOLOGY CO., LTD.

No. 3, Industrial 2nd Rd., Ping-Chen Industrial District,
Taoyuan, 324, Taiwan, R.O.C.

TEL: 886-3-4690038 FAX: 886-3-4697532

E-mail: tstsales@mail.taisaw.com Web: www.taisaw.com

Low Pass Filter 699 ~ 960MHz

MODEL NO.:TL0015A

REV. NO.:3

A. MAXIMUM RATING:

1. Input Power Level: 3W
2. DC Voltage : 5V
3. Operating Temperature: -40°C to + 85°C
4. Storage Temperature: -40°C to +85°C
5. Moisture Sensitivity Level: Level(**MSL1**)
6. No Marking

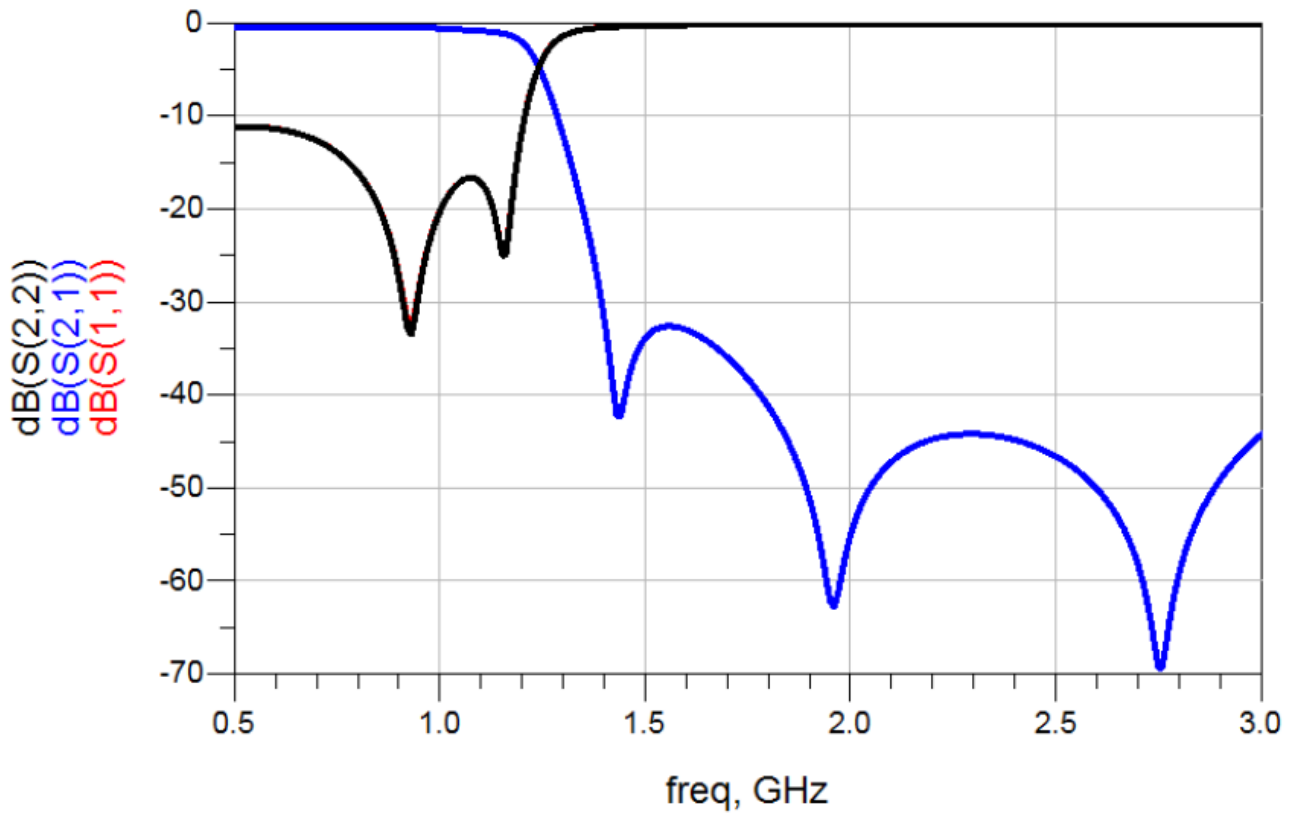


Electrostatic Sensitive Device (ESD)

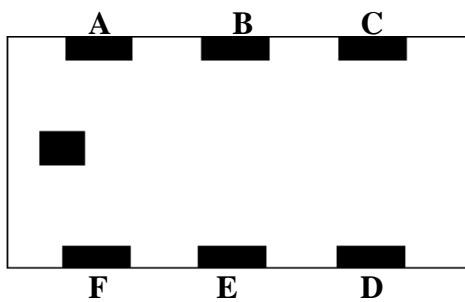
B. ELECTRICAL CHARACTERISTICS:

Item	Specifications
Insertion Loss 25degree C	Frequency Range
	0.6 dB max 699~787MHz 0.7 dB max 787~960MHz
Return Loss	10 dB min
Attenuation	30 dB min 1427 ~ 1920 MHz 30 dB min 2097 ~ 2880 MHz
In/Output Impedance	50 Ω

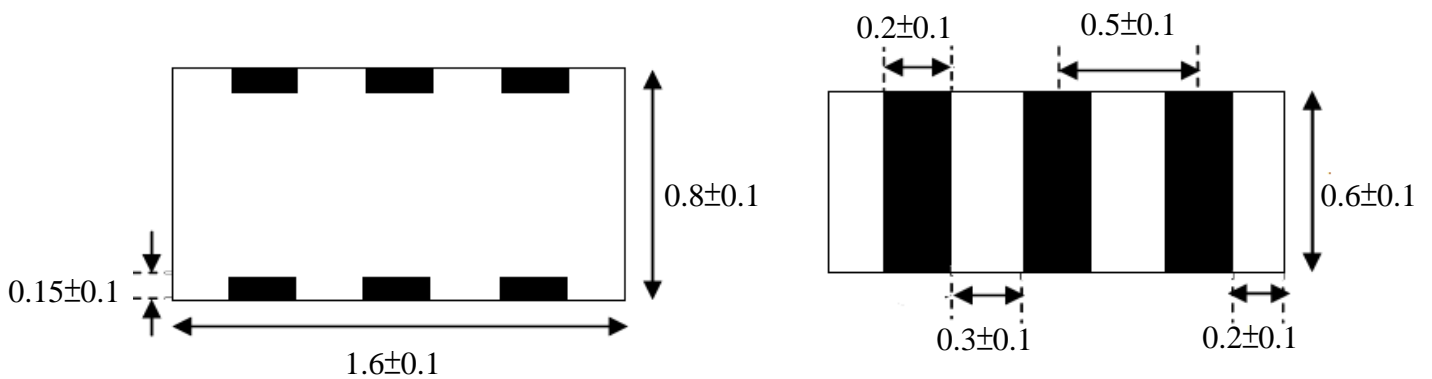
C. Frequency Characteristics : (Simulation)



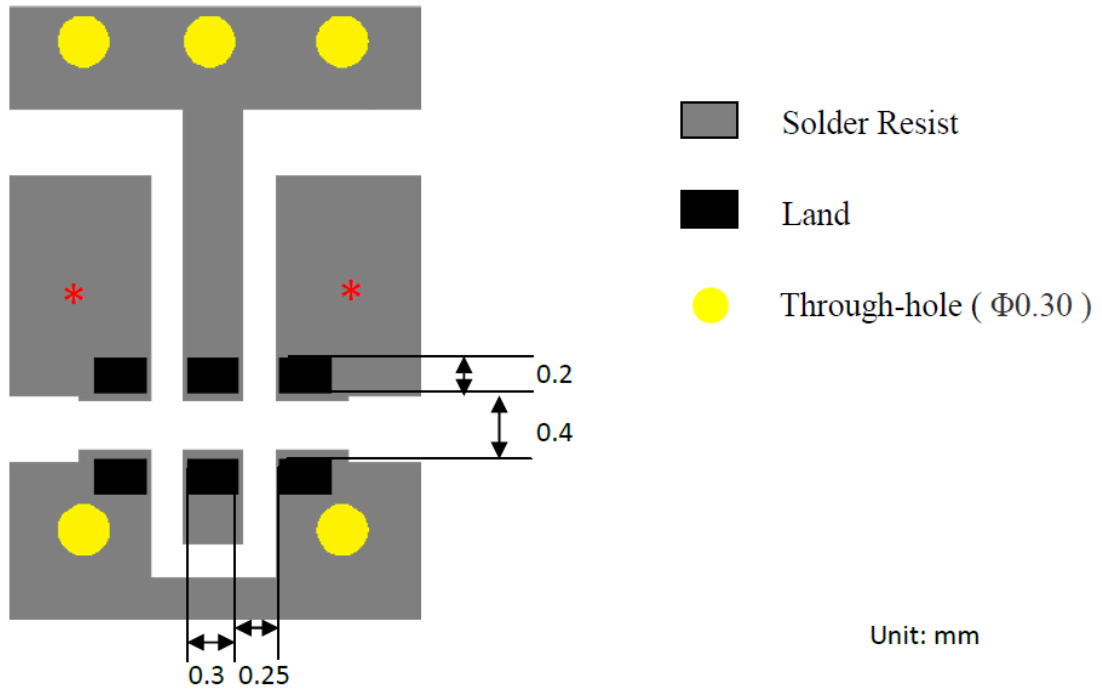
D. Pin Assignment :



A : Input
 C : Output
 B,D,F : Ground
 E : NC

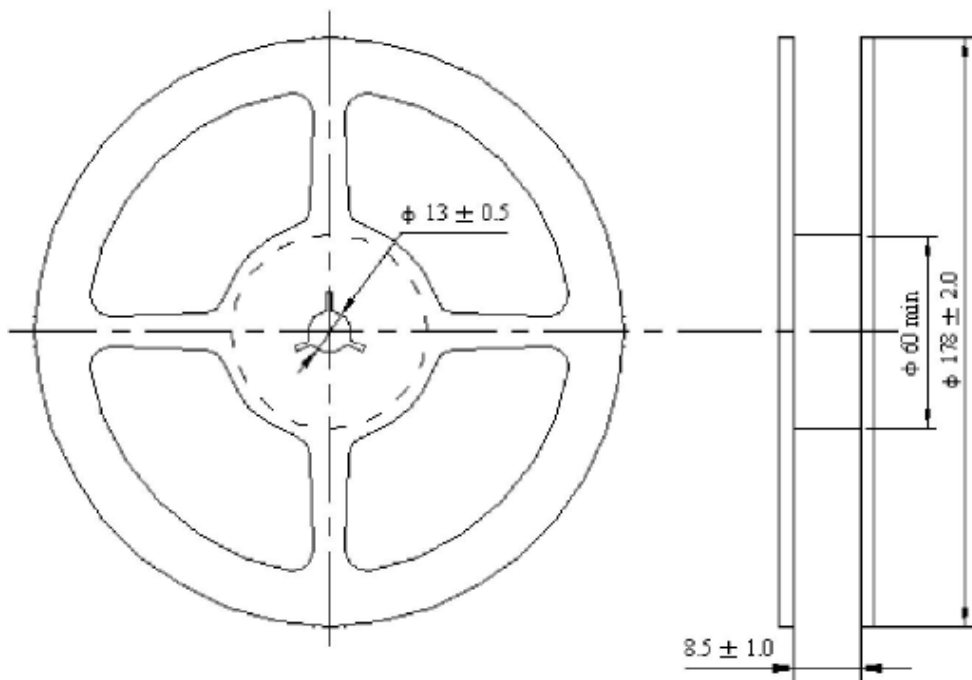


E. PCB Footprint

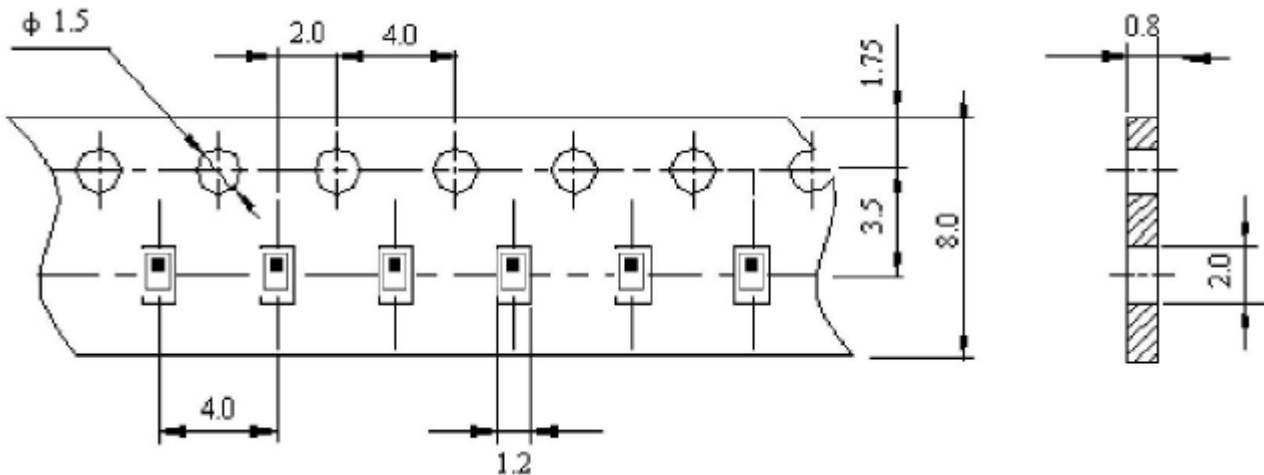


F. Packing:

1.Reel(6000pcs/reel)



2. Plastic Tape



G. Recommended Reflow Profile:

1. Preheating shall be fixed at 150~180°C for 60~90 seconds.
2. Ascending time to preheating temperature 150°C shall be 30 seconds min.
3. Heating shall be fixed at 220°C for 50~80 seconds and at 245~260°C peak (min. 10sec).
4. Time : 2 times.

