



TAI-SAW TECHNOLOGY CO., LTD.

No. 3, Industrial 2nd Rd., Ping-Chen Industrial District,
Taoyuan, 324, Taiwan, R.O.C.

TEL: 886-3-4690038 FAX: 886-3-4697532

E-mail: tstsales@mail.taisaw.com Web: www.taisaw.com

Product Specifications Approval Sheet

Product Description: LTCC Filter 2450 MHz SMD 2.0x1.25 mm (1160MHz BW)

TST Part No.: TL0024A

Customer Part No.: _____

Customer signature required
Company: _____
Division: _____
Approved by : _____
Date: _____

Checked by: _____ Hongpu Lin *Hong Pu Lin*

Approved by: _____ Andy Yu *Andy Yu*

Date: _____ 2019/03/05

1. Customer signed back is required before TST can proceed with sample build and receive orders.
2. Orders received without customer signed back will be regarded as agreement on the specifications.
3. Any specifications changes must be approved upon by both parties and a new revision of specifications shall be released to reflect the change



TAI-SAW TECHNOLOGY CO., LTD.

No. 3, Industrial 2nd Rd., Ping-Chen Industrial District,
Taoyuan, 324, Taiwan, R.O.C.

TEL: 886-3-4690038 FAX: 886-3-4697532

E-mail: tstsales@mail.taisaw.com Web: www.taisaw.com

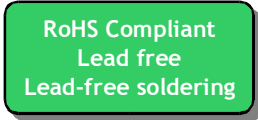
LTCC Filter 2450 MHz SMD 2.0X1.25 mm (1160 MHz BW)

MODEL NO.: TL0024A

REV.1

A. MAXIMUM RATING:

1. Operating temperature range: -40 °C to +85 °C
2. Storage temperature range: -40 °C to +85 °C
3. Moisture Sensitive Level: Level 1 (MSL1)



Electrostatic Sensitive Device (ESD)

B. ELECTRICAL CHARACTERISTICS:

Source impedance (unbalanced) : $Z_s = 50 \Omega$

Load Impedance (balanced) : $Z_L = 50 \Omega$

Parameters	Unit	Specifications
Center Frequency (Fc)	MHz	2450.0
Pass Band Width (BW)	MHz	1870~3030 MHz
Insertion Loss in BW	dB	0.7 max. at 25 °C
Return Loss in BW	dB	9.5 min
VSWR	-	2.0 max.
Attenuation	dB	25.0 min. @ 902 ~ 928 MHz 30.0 min. @ 4800 ~ 7500 MHz 25 min.
Impedance	Ω	50

Operating & Storage Condition(Component)

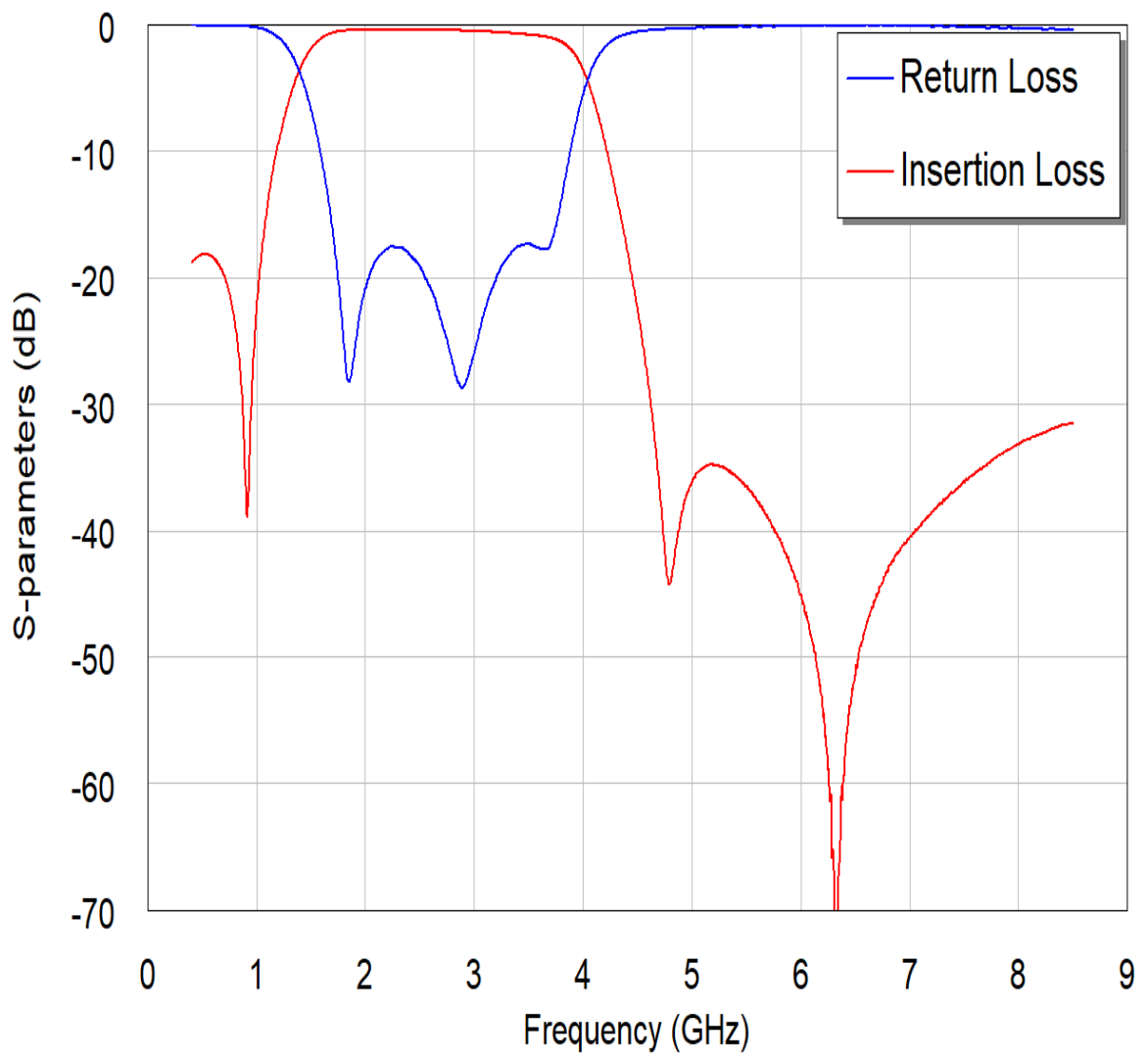
- Operation Temperature Range: -40 to +85°C
- Storage Temperature Range: -40 to +85°C

Storage Condition before Soldering (Included packaging material)

- Storage Temperature Range: +5 to +40°C
- Humidity: 30 to 70% relative humidity

C. FREQUENCY CHARACTERISTICS:

Frequency Response



D. PACKAGE DIMENSIONS:

CONSTRUCTION

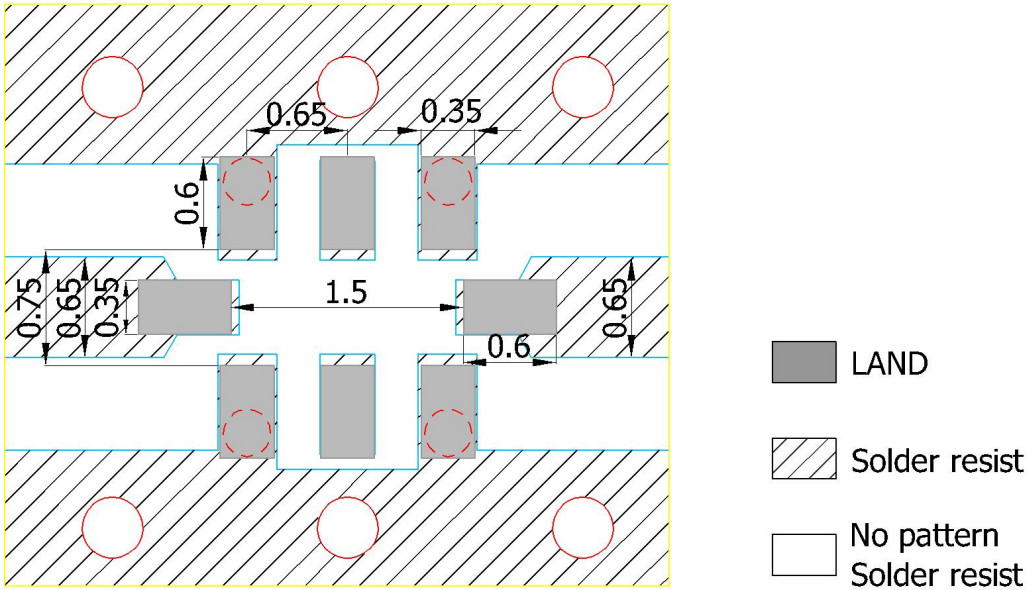
Figure	PIN	Connection
<p>Top view</p>	1	GND
	2	NC
	3	GND
	4	OUTPUT Port
	5	GND
	6	NC
	7	GND
	8	INPUT Port

DIMENSIONS

Figure	Symbol	Dimension (mm)
<p>Top view</p> <p>Bottom view</p> <p>Side view</p> <p>Side view</p>	L	2.00 ± 0.15
	W	1.25 ± 0.10
	T	1.05 max.
	A	0.20 ± 0.10
	B	0.30 ± 0.10
	C	0.35 ± 0.10
	D	0.65 ± 0.10
	E	0.20 ± 0.10
	F	0.20 ± 0.10
	G	0.475 ± 0.10
H	0.30 ± 0.10	

E. PCB Footprint

(PCB Layout)



Unit: mm

Line width to be designed to match 50Ω characteristic impedance, depending on PCB material and thickness.