



TAI-SAW TECHNOLOGY CO., LTD.

No. 3, Industrial 2nd Rd., Ping-Chen Industrial District,
Taoyuan, 324, Taiwan, R.O.C.

TEL: 886-3-4690038 FAX: 886-3-4697532

E-mail: tstsales@mail.taisaw.com Web: www.taisaw.com

Product Specifications Approval Sheet

Product Description: LTCC Filter 7240MHz BW 2000MHz 2.0x1.25x0.95mm
TST Parts No.: TL0049AA0093

Customer Parts No.: _____

Customer signature required
Company: _____
Division: _____
Approved by : _____
Date: _____

Checked by: _____ Nina Chen *Nina Chen*

Approved by: _____ Kazuma Lee *Kazuma Lee*

Date: _____ 2022/02/22

1. Customer signed back is required before TST can proceed with sample build and receive orders.
2. Orders received without customer signed back will be regarded as agreement on the specifications.
3. Any specifications changes must be approved upon by both parties and a new revision of specifications shall be released to reflect the changes.



TAI-SAW TECHNOLOGY CO., LTD.

No. 3, Industrial 2nd Rd., Ping-Chen Industrial District,
Taoyuan, 324, Taiwan, R.O.C.

TEL: 886-3-4690038 FAX: 886-3-4697532

E-mail: tstsales@mail.taisaw.com Web: www.taisaw.com

LTCC Filter 7240MHz BW 2000MHz 2.0x1.25x0.95mm

MODEL NO.: TL0049AA0093

REV. NO.:1.0

A. Maximum Rating:

1. Input Power : 3W
2. DC Voltage : 0 V
3. Operating Temperature: -40°C to +105°C
4. Storage Temperature: -40°C to +105°C
5. Moisture Sensivity Level: Level 1 (**MSL 1**)

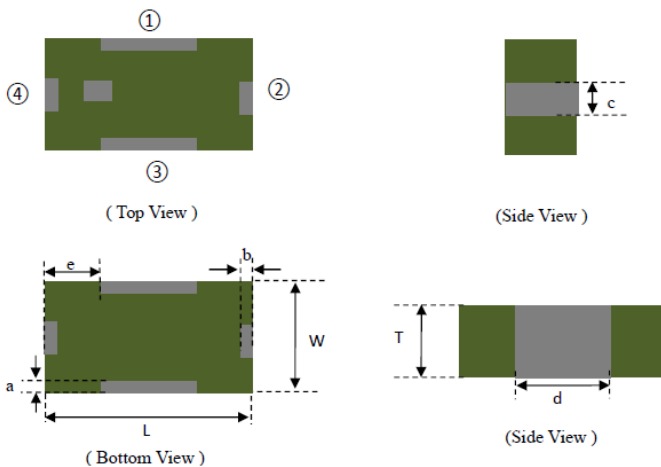


Electrostatic Sensitive Device (ESD)

B. Electrical Characteristics:

Item		Unit	Spec
Center frequency		MHz	7240
Insertion Loss	6240~8240MHz	dB	2.5Max
Return Loss	6240~8240MHz	dB	10Min
Ripple	6240~8240MHz	dB	1.0Max
Delay	6240~8240MHz	ns	3.0Max
Attenuation	DC~5200 MHz	dB	35Min
	2400~2500 MHz	dB	35Min
	5200~5860 MHz	dB	15Min
	9000~9500 MHz	dB	10Min
	9500~18000 MHz	dB	30Min

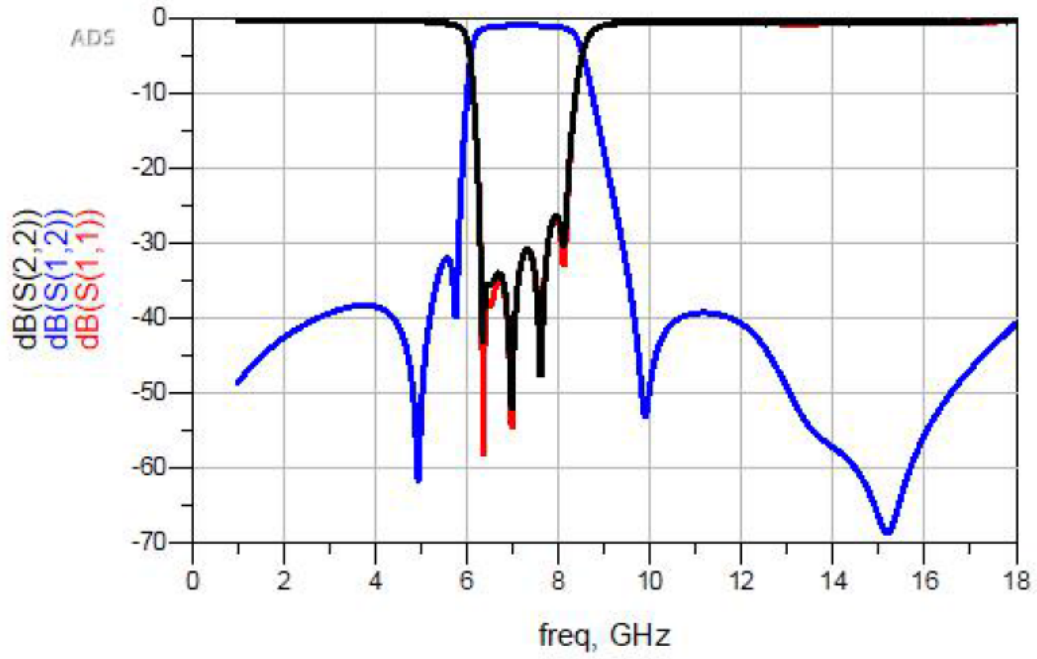
C. Outline Drawing:



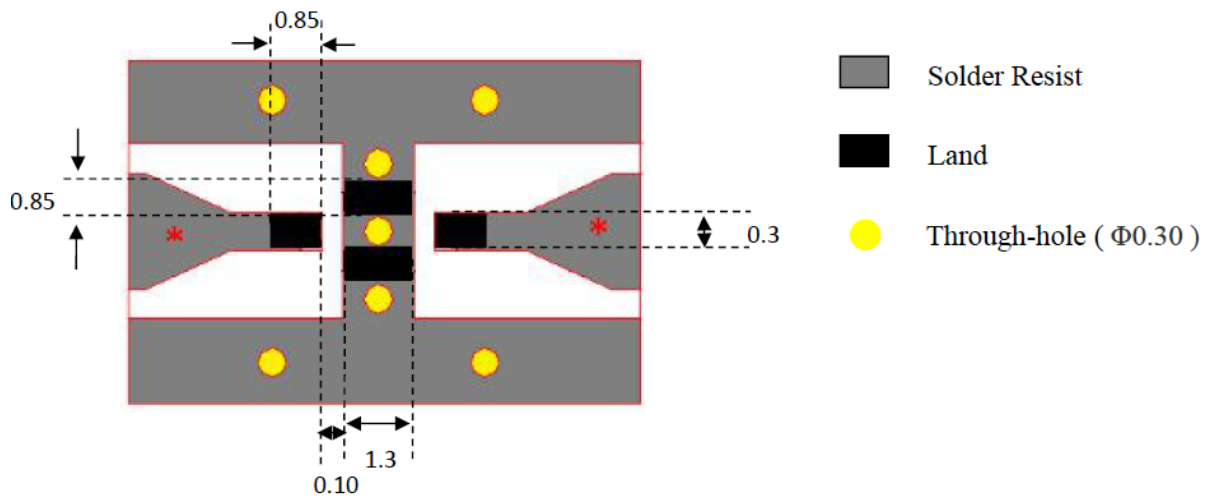
Number	Terminal Name
①	GND
②	OUT
③	GND
④	IN

Symbols	L	W	T	a	b	c	d	e
Dimensions	2.0+/-0.15	1.25+/-0.10	0.95+/-0.10	0.25+/-0.10	0.25+/-0.10	0.3+/-0.10	1.3+/-0.10	0.35+/-0.10

D. Frequency Characteristics:



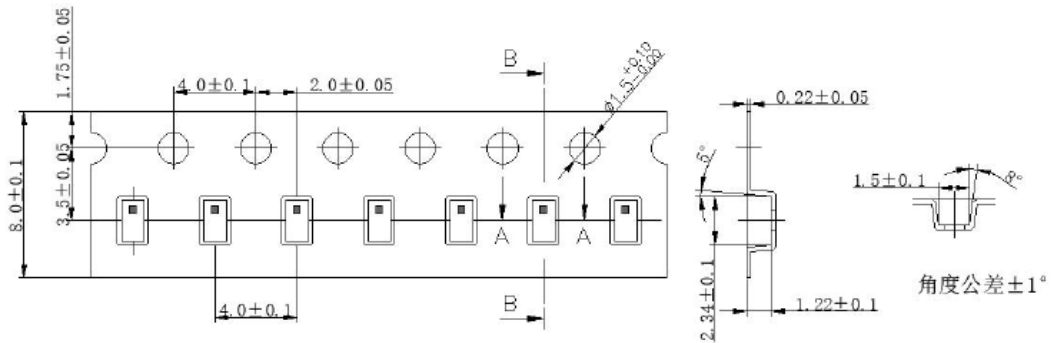
E. Pcb Foot Print:



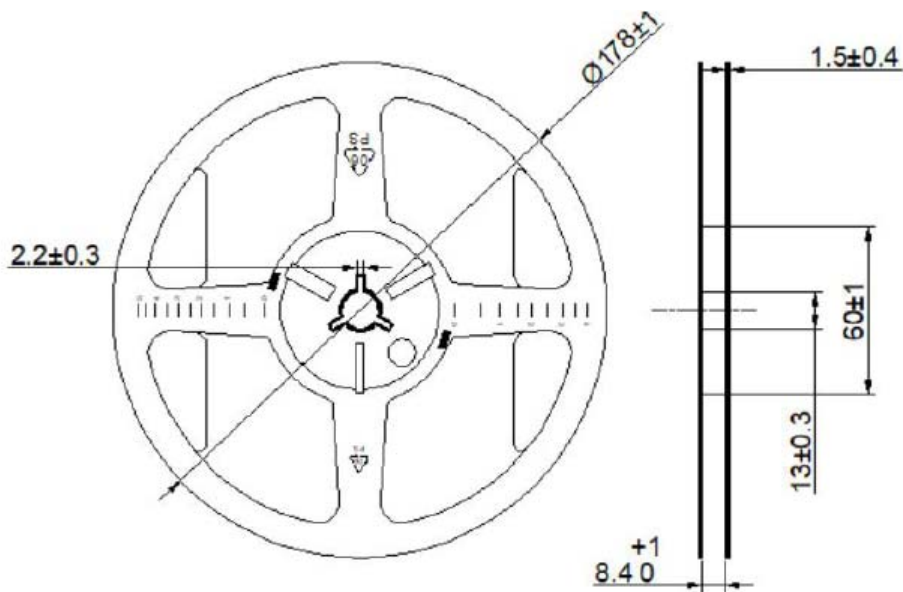
*Line width should be designed to match 50Ω characteristic impedance, depending on PCB material and thickness

F.Packing:

1. Plastic Tape



2. Reel (4000 pcs/Reel)



G. Recommended Solder Profile

1. Preheating shall be fixed at $150 \sim 180^\circ\text{C}$ for 60~90 seconds.
2. Ascending time to preheating temperature 150°C shall be 30 seconds min.
3. Heating shall be fixed at 220°C for 50~80 seconds and at $260^\circ\text{C} +0/-5^\circ\text{C}$ peak (20~40sec).
4. Time: 2 times.

