



TAI-SAW TECHNOLOGY CO., LTD.

No. 3, Industrial 2nd Rd., Ping-Chen Industrial District,
Taoyuan, 324, Taiwan, R.O.C.

TEL: 886-3-4690038 FAX: 886-3-4697532

E-mail: tstsales@mail.taisaw.com Web: www.taisaw.com

Product Specifications Approval Sheet

Product Description: DR Filter 5670MHz (BW=380MHz) 3.25x1.85x2.58

TST Parts No.: TR0012A

Customer Parts No.: _____

<p>Company: _____</p> <p>Division: _____</p> <p>Approved by : _____</p> <p>Date: _____</p>
--

Checked by: _____ Hong Pu Lin *Hong Pu Lin*

Approval by: _____ Andy Yu *Andy Yu*

Date: _____ 06 / 20 / 2018

1. Customer signed back is required before TST can proceed with sample build and receive orders.
2. Orders received without customer signed back will be regarded as agreement on the specifications.
3. Any specifications changes must be approved upon by both parties and a new revision of specifications shall be released to reflect the changes.



TAI-SAW TECHNOLOGY CO., LTD.

No.3, Industrial 2nd Rd., Ping-Chen Industrial District, Taoyuan, Taiwan, R.O.C.

TEL: 886-3-4690038 FAX: 886-3-4697532

E-mail: tstsales3@mail.taisaw.com Web: www.taisaw.com

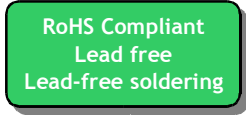
DR Filter 5670MHz 380MHz BW

MODEL NO.: TR0012A

REV. NO.1

A. MAXIMUM RATING:

1. Operating temperature range: -40°C to 85°C
2. Storage temperature range: -40°C to 85°C
3. Input Power Level : 1W
4. Input/Output Impedance:50 Ohm
5. Moisture Sensitivity Level: Level(MSL1)

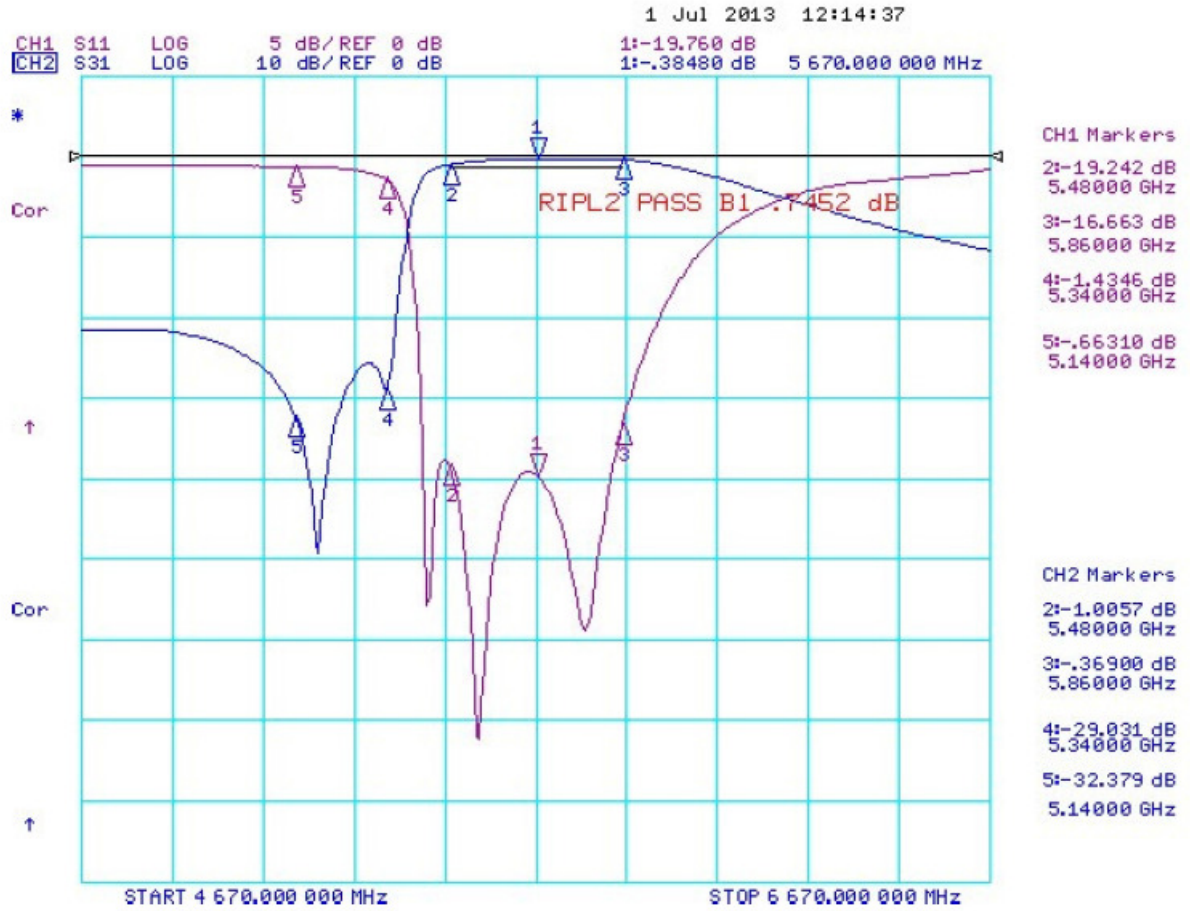


Electrostatic Sensitive Device

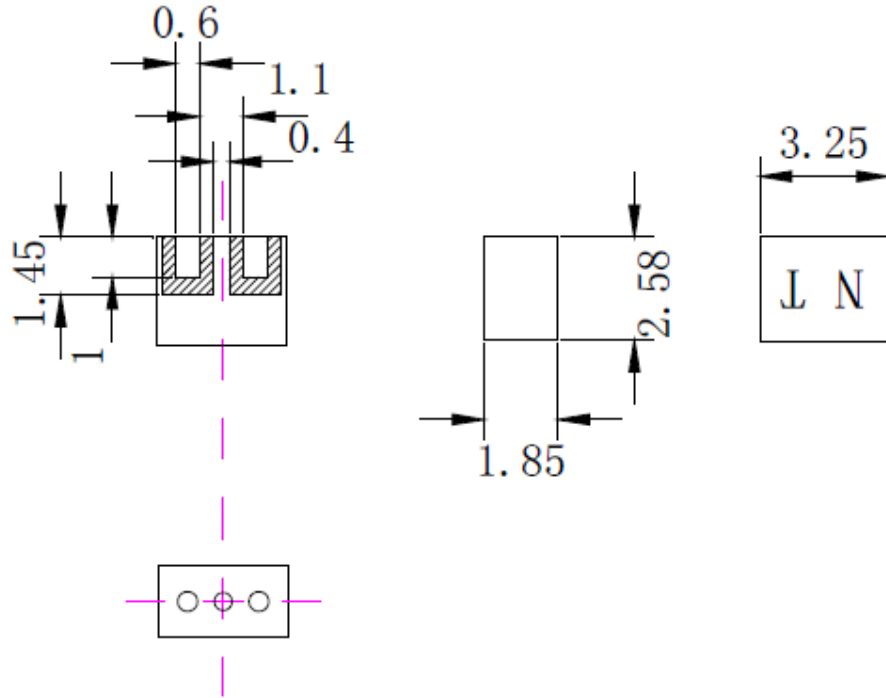
B. CHARACTERISTICS:

Item	Unit	Spec.
Center frequency, F_c	MHz	5670
Insertion Loss, (5480~5860MHz) 25°C	dB	1.5max
Insertion Loss, (5480~5860MHz) 70°C	dB	2.1max
Passband Ripple (5480~5860MHz)	dB	1.6max
Return Loss (5480~5860MHz)	dB	10min
Specifies the absolute value of Attenuation		
2300~2700MHz	dB	25min
5140~5340MHz (25°C)	dB	19min
5114~5340MHz (70°C)	dB	17min

C. FREQUENCY CHARACTERISTICS:

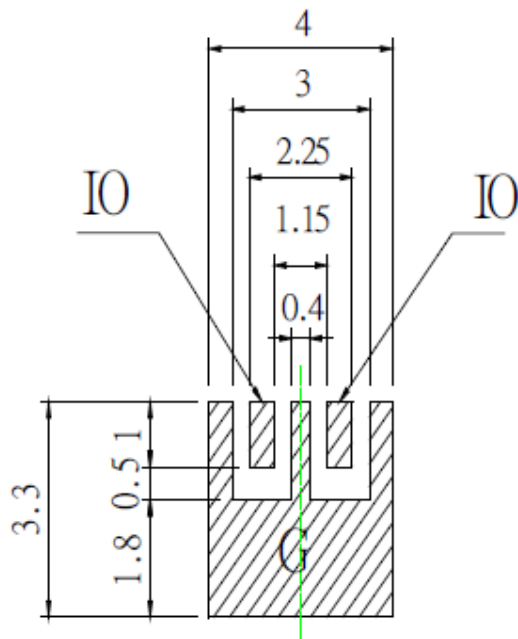



D. OUTLINE DRAWING:



Dimensions in mm

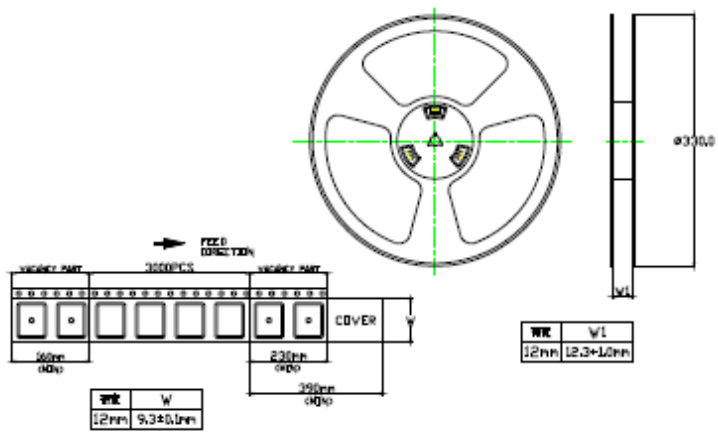
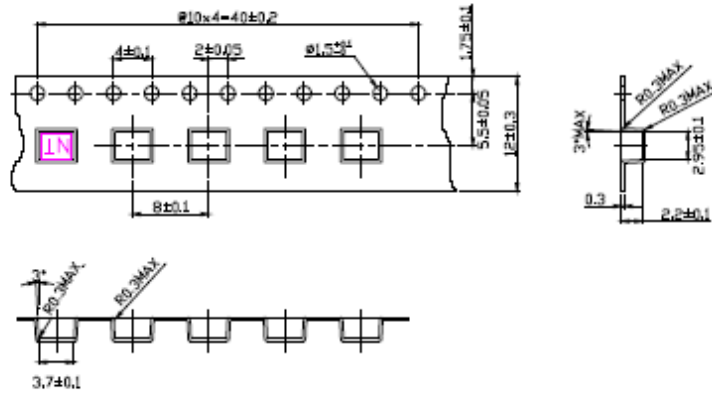
Tolerance: ± 0.2



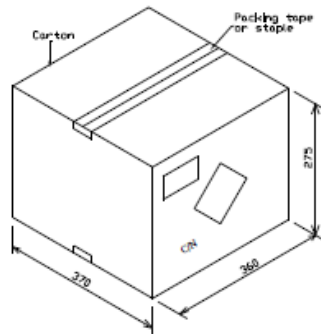
 Solder pads:

I/O Pads must be connected to lines with 50Ω impedance. In the application a termination of 50Ω must be realized.

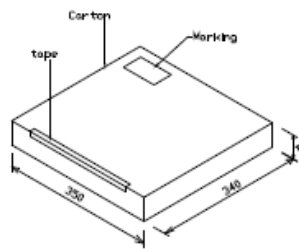
E. PACKING:



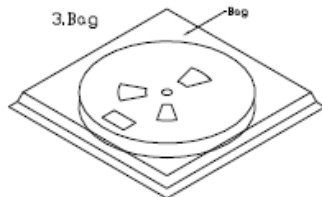
1.Outer Carton



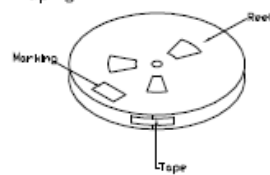
2.Inner Carton



3.Bag



4.Taping



Unit:mm

F. RECOMMENDED REFLOW PROFILE:

